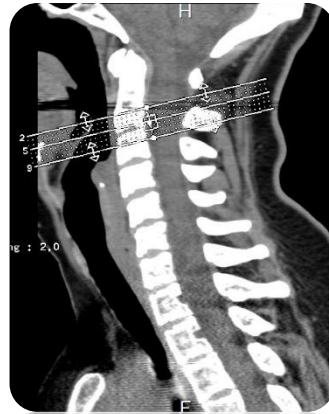


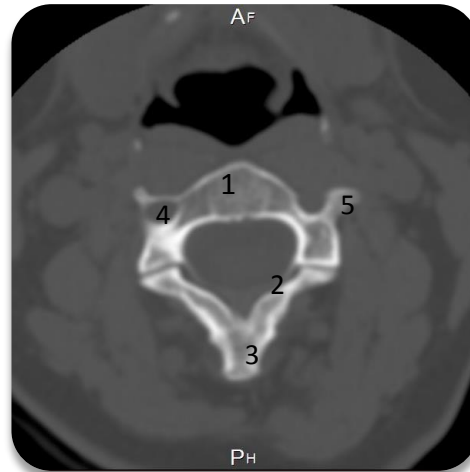
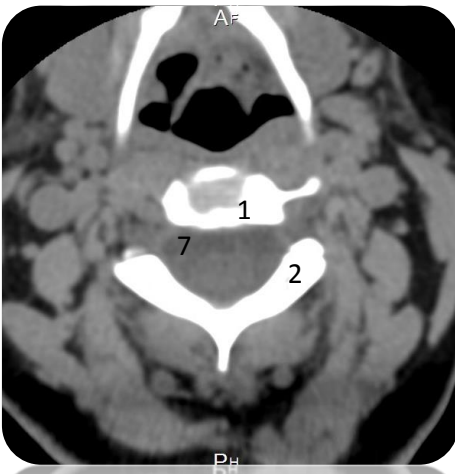
# **ANEXOS**

## TC da coluna cervical



Posição do corte

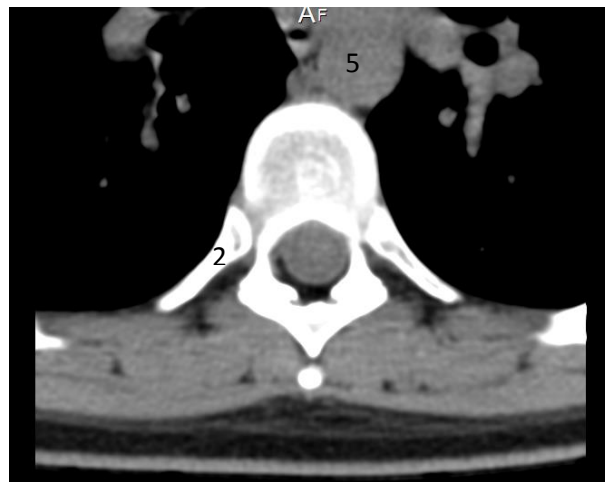
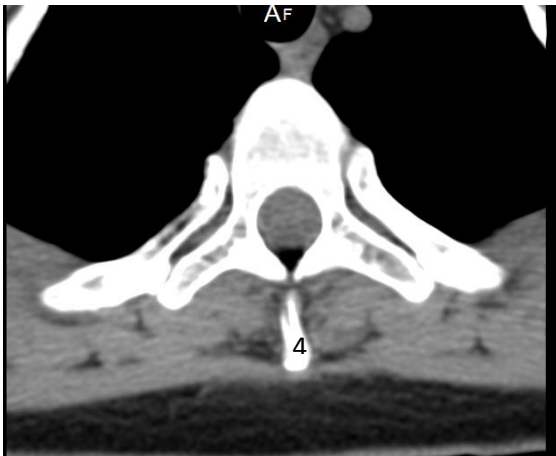
## Topograma



## Legenda

1. Corpo vertebral
2. Lamina
3. Apófise espinhosa
4. Buraco transverso
5. Apófise transverso
6. Osso hióide
7. Espaço subaracnoide anterior

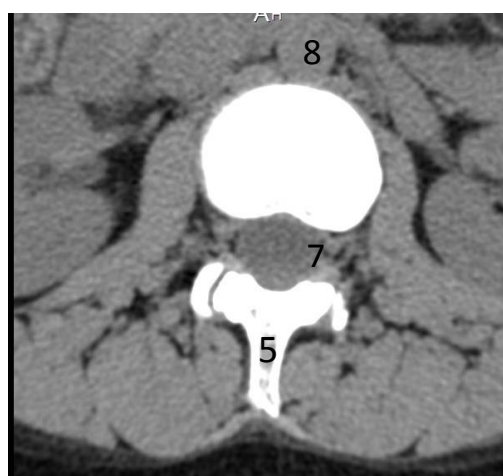
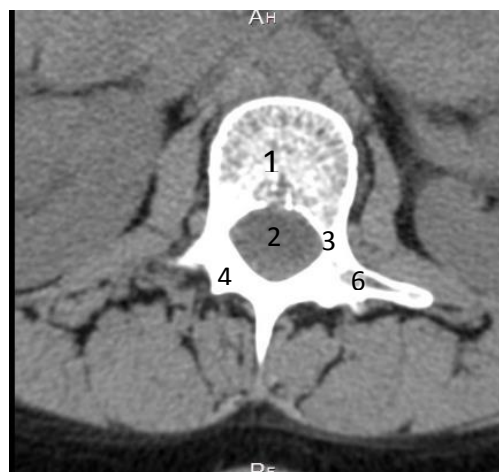
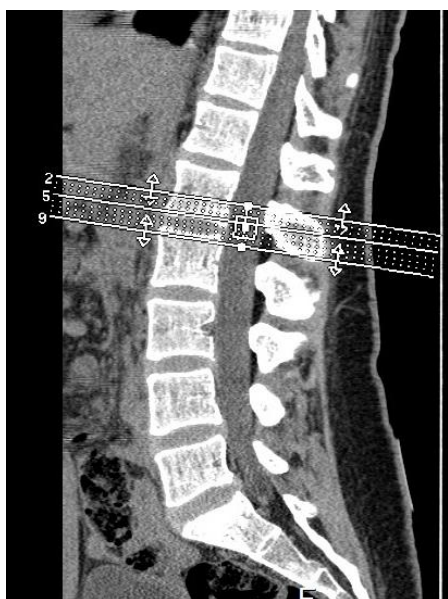
## TC da Coluna dorsal



## Legenda

1. Corpo vertebral
2. Apófise Transversa
3. Costela
4. Apófise espinhosa
5. Aorta

## TC da Coluna Lombar



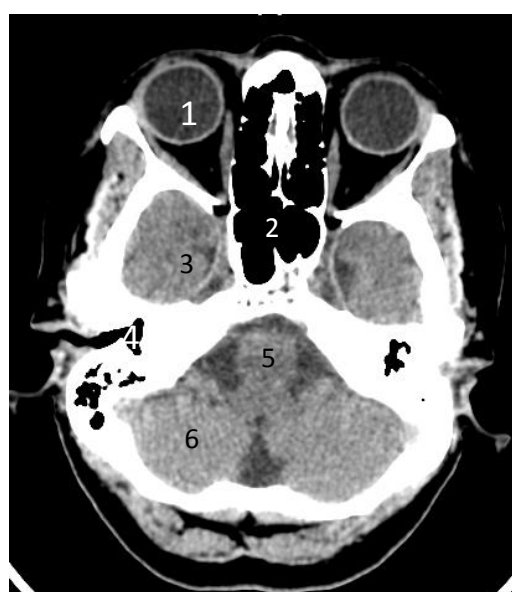
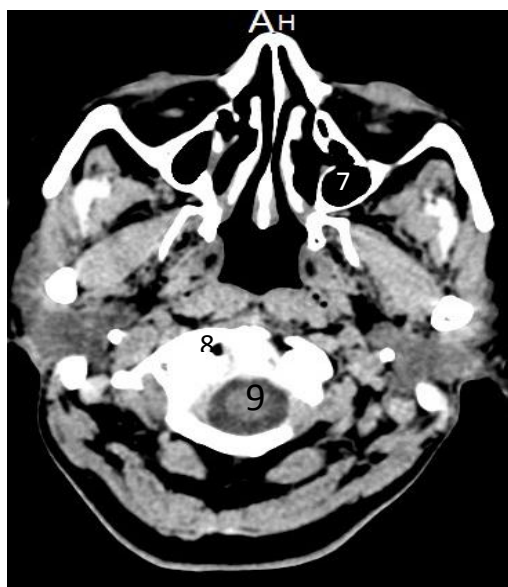
### Legenda

1. Corpo vertebral
2. Espaço epidural
3. Pedículo
4. Lamina
5. Apófise espinhosa
6. Apófise transversa
7. Saco dural
8. Aorta.

## TC do Crânio



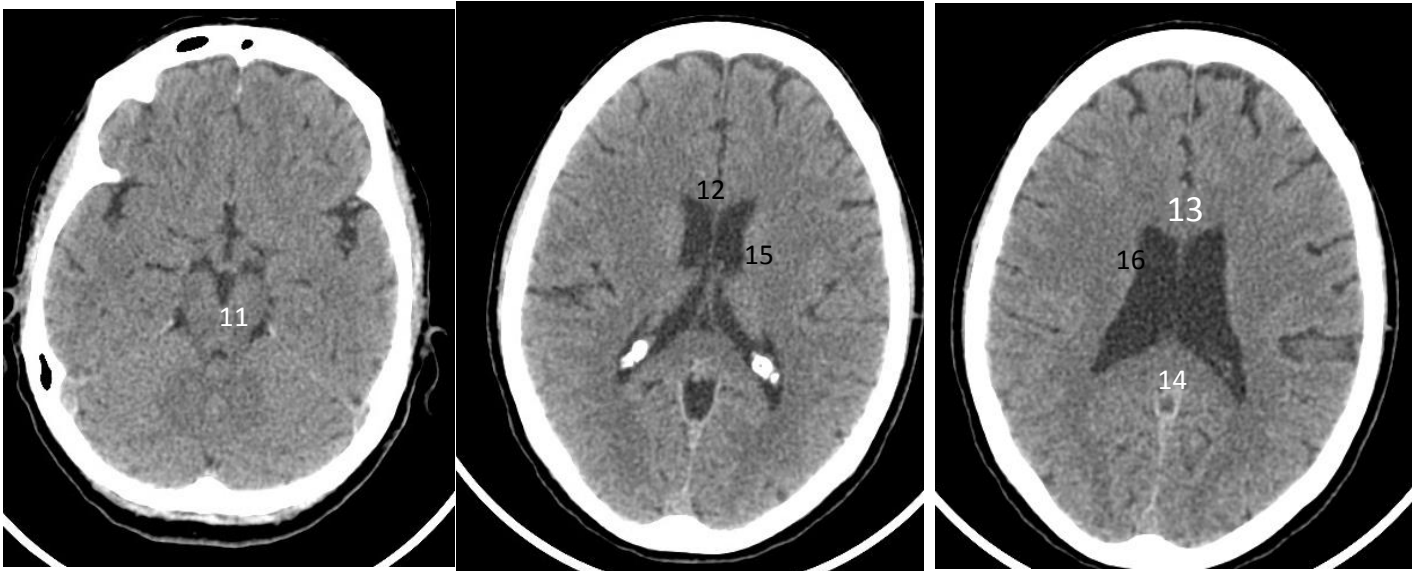
Topograma



## Legenda

1. Globo ocular
2. Seio esfenoidal
3. Lobo temporal

4. Células mastóideas
5. Bulbo
6. Hemisfério cerebelar
7. Seio maxilar
8. Artéria vertebral
9. Tronco encefálico
10. Quarto ventrículo



11. Protuberancia
12. Corpo caloso
13. Joelho de corpo caloso
14. Esplénio do corpo caloso
15. Ventrículo lateral
16. Núcleo caudado