



# Jornal de Pediatria

www.jpmed.com.br



## REVIEW ARTICLE

### Growth and mouth breathers<sup>☆,☆☆</sup>

**Q1** Mario Morais-Almeida<sup>a</sup>, Gustavo Falbo Wandalsen<sup>b</sup>, Dirceu Solé<sup>b,\*</sup>

**Q2** <sup>a</sup> Centro de Alergia dos Hospitais CUF, Lisbon, Portugal

<sup>b</sup> Universidade Federal de São Paulo (UNIFESP), Escola Paulista de Medicina (EPM), Departamento de Pediatria, São Paulo, SP, Brazil

Received 11 October 2018; accepted 9 November 2018

#### KEYWORDS

Allergic rhinitis;  
Adenoid hypertrophy;  
Tonsillar hypertrophy;  
Mouth breather;  
Growth

#### Abstract

**Objective:** To assess the relationship between mouth breathing and growth disorders among children and teenagers.

**Data source:** Search on MEDLINE database, over the last 10 years, by using the following terms: "mouth breathing", "adenotonsillar hypertrophy", "allergic rhinitis", "sleep disturbance" AND "growth impairment", "growth hormone", "failure to thrive", "short stature", or "failure to thrive".

**Data summary:** A total of 247 articles were identified and, after reading the headings, this number was reduced to 45 articles, whose abstracts were read and, of these, 20 were deemed important and were included in the review. In addition of these articles, references mentioned in them and specific books on mouth breathing deemed important were included. Hypertrophy of palatine and/or pharyngeal tonsils, whether associated with allergic rhinitis, as well as poorly controlled allergic rhinitis, are the main causes of mouth breathing in children. Respiratory sleep disorders are frequent among these patients. Several studies associate mouth breathing with reduced growth, as well as with reduced growth hormone release, which are reestablished after effective treatment of mouth breathing (clinical and/or surgical).

**Conclusions:** Mouth breathing should be considered as a potential cause of growth retardation in children; pediatricians should assess these patients in a broad manner.

© 2018 Sociedade Brasileira de Pediatria. Published by Elsevier Editora Ltda. This is an open access article under the CC BY-NC-ND license (<http://creativecommons.org/licenses/by-nc-nd/4.0/>).

<sup>☆</sup> Please cite this article as: Morais-Almeida M, Wandalsen GF, Solé D. Growth and mouth breathers. J Pediatr (Rio J). 2018. <https://doi.org/10.1016/j.jpmed.2018.11.005>

<sup>☆☆</sup> Study conducted at Universidade Federal de São Paulo, Escola Paulista de Medicina, São Paulo, SP, Brazil.

\* Corresponding author.

E-mail: [sole.dirceu@gmail.com](mailto:sole.dirceu@gmail.com) (D. Solé).

<https://doi.org/10.1016/j.jpmed.2018.11.005>

0021-7557/© 2018 Sociedade Brasileira de Pediatria. Published by Elsevier Editora Ltda. This is an open access article under the CC BY-NC-ND license (<http://creativecommons.org/licenses/by-nc-nd/4.0/>).

**PALAVRAS-CHAVE**

Rinite alérgica;  
 Hipertrofia de  
 adenoide;  
 Hipertrofia de  
 amígdala;  
 Respirador oral;  
 Crescimento

**Crescimento e respiradores orais****Resumo**

**Objetivo:** Foi objetivo deste artigo avaliar a relação entre respiração oral e distúrbios do crescimento entre crianças e adolescentes.

**Fonte de dados:** Busca na base de dados do MEDLINE, nos últimos 10 anos, empregando os seguintes termos: "mouth breathing" ou "adenotonsillar hypertrophy", ou "allergic rhinitis" ou "sleep disturbance" AND "growth impairment" ou "growth hormone" ou "failure to thrive" ou "short stature" ou "failure to thrive".

**Síntese dos dados:** Foram identificados 247 artigos que após a leitura dos títulos foram reduzidos a 45 cujos resumos foram lidos e destes 20 foram considerados de importância e integraram a revisão. Além desses, referências por eles citadas e livros texto específicos sobre respiração oral considerados importantes foram incluídos. A hipertrofia de tonsilas palatinas e/ou faríngeas, associadas ou não à rinite alérgica, assim como a rinite alérgica mal controlada são as principais causas de respiração oral na criança. Distúrbios respiratórios do sono são frequentes entre esses pacientes. Vários estudos associam a respiração oral à redução do crescimento, bem como à redução de liberação de hormônio do crescimento, que são restabelecidos após o tratamento efetivo da respiração oral (clínico e/ou cirúrgico).

**Conclusões:** A respiração oral deve ser cogitada como possível causa de retardo de crescimento em crianças e cabe ao pediatra a tarefa de investigar esses pacientes de forma mais abrangente. © 2018 Sociedade Brasileira de Pediatria. Publicado por Elsevier Editora Ltda. Este é um artigo Open Access sob uma licença CC BY-NC-ND (<http://creativecommons.org/licenses/by-nc-nd/4.0/>).

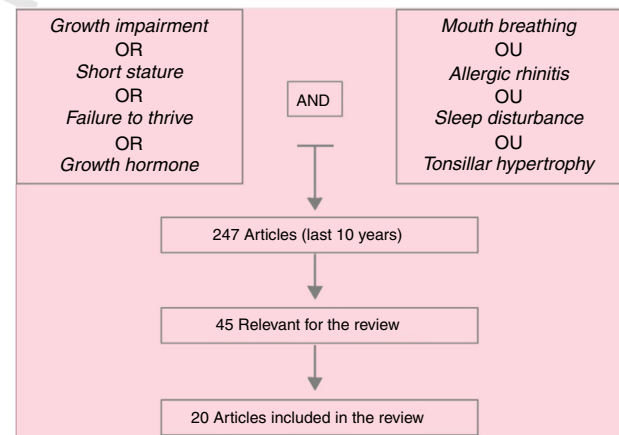
**Introduction**

A mouth breather is every individual who breaths through the mouth as a result of a pathological adaptation, whether in the presence of nasal and/or pharyngeal obstruction.<sup>1</sup> The primary function of the nose is to bring the inhaled air to the lungs under ideal conditions for hematosis, *i.e.*, heated, humidified, and free of microorganisms and pollutants present in room air.<sup>2</sup>

In children, nasal breathing is more important than in adults. At birth, nasal breathing is a mandatory condition due to the high position of the larynx in comparison with the oral cavity, which allows the newborn to be breastfed and breathe. The high location of the epiglottis, in this case, makes it difficult for air to enter the lower airways when the flow comes from the mouth, causing an intense respiratory discomfort in the presence of bilateral nasal obstruction.<sup>1,2</sup>

Additionally, nasal breathing in children aids the growth of central facial bones and the functional arrangement of all the muscles related to breathing and chewing.<sup>1,2</sup> Under chronic nasal obstruction conditions, an underdevelopment of the palatal processes of maxilla may be observed, leading to the appearance of high arched hard palate. Additionally, mouth breathing requires several muscular and postural adaptations to adjust to a new form of breathing, chewing, and even swallowing food.<sup>2</sup>

Lowering of the mandible, hypotonic lip musculature, and changes in the phases of swallowing are common findings in these children and, if unidentified and treated early, can become irreversible. Furthermore, mouth breathing concomitant to nasal obstruction may predispose to airway collapse and, consequently, respiratory sleep disorders (RSD). Fig. 1 presents the article search method papers used in this review.



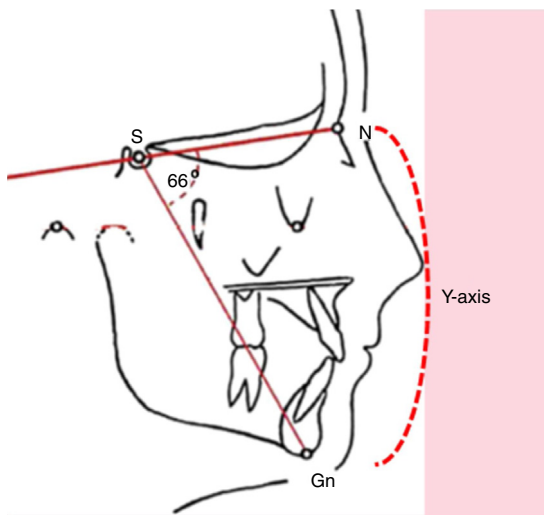
**Figure 1** Search method in MEDLINE database (last 10 years).

**Prevalence of mouth breathers**

The prevalence of chronic mouth breathing in children has been hardly studied and its distribution in the different age groups is unknown. Values between 3.4% and 56.8% have been documented based on the studied population (healthy, with dental, respiratory problems, or others), age group assessed, and diagnosis method used (questionnaire, physical examination).<sup>3-5</sup>

**Clinical status**

Chronic mouth breathing may determine skeletal and myofunctional changes that hinder facial growth. Many children with mouth breathing present elongated facies, incomplete lip closure, shortened upper lip with



**Figure 2** Y-axis of facial growth (represented by the opening of the NS-Gn angle).

accentuated concavity, everted lower lip, and presence of dark circles, characterizing adenoid facies.<sup>6-9</sup> At cephalometric evaluation, an increased Y-axis is observed (Fig. 2).

The presence of snoring, whether associated with apnea or respiratory distress during sleep, is a frequent complaint among parents or caregivers, followed by restless sleep, frequent night awakenings,<sup>1</sup> bruxism,<sup>11</sup> and sometimes somnambulism.<sup>10-12</sup> Mouth breathing is often associated with other harmful oral habits, such as thumb sucking, pacifier sucking, sucking and biting the lips, and nail biting, among others, impacting quality of life.<sup>13</sup>

Chewing, swallowing, and speech problems (linguodental phonemes) are also observed. Maxillary arch atresia and the presence of high arched palate are common findings associated with cross-bite, which can already be observed in preschool children.<sup>6-10</sup>

In addition, the presence of RSDs, such as snoring, increased airway resistance, or even apnea, is common among these patients; its frequency ranges from 3.3% (children at 5-6 years) to 42% (mouth breathers).<sup>5</sup> Obstructive sleep apnea syndrome (OSAS) is the most severe form of RSD, and affected children may have neurocognitive impairment due to attention and concentration deficits, hyperactivity, morning tiredness, decreased conceptual, verbal and non-verbal reasoning skills, school disorders,<sup>14,15</sup> or even delayed weight and height gain.<sup>1,2</sup> Currently, *cor pulmonale*<sup>16</sup> and systematic arterial hypertension<sup>17</sup> are very rare complications associated with OSAS.

## Etiology of mouth breathing in children

Among the several causes of mouth breathing in children, the most frequent are hypertrophy of pharyngeal (adenoids) and/or palatine tonsils (amygdala) and untreated (and, therefore, uncontrolled) allergic rhinitis. Nonetheless, other etiologies should also be considered: unilateral or bilateral choanal atresia, anatomical variations of the nasal conchae, nasal foreign body, septal deformities or nasal masses, and even rarer entities that can cause nasal congestion, such

as cystic fibrosis, primary ciliary dyskinesia, and primary immunodeficiencies.

Hypertrophy of pharyngeal and/or palatine tonsils, albeit present in the early phase of life, usually becomes apparent around the age of 2 years, as it follows the development of the lymphoid system and can worsen with the advancement of age. Most of the times, the diagnosis is confirmed through a simple lateral radiography of the face and, in doubtful cases, through nasofibroscope. Hypertrophy of the palatine tonsils can be confirmed through a simple oroscopy.

Rhinitis can be defined as a symptomatic inflammation of the nasal mucous membrane and is characterized by nasal obstruction, rhinorrhea (anterior and posterior), sneezing, and itchy nose. It is a very common problem since pre-school age and can affect up to 40% of children.<sup>18</sup> Nasal congestion is the most frequent complaint in children with pre-school rhinitis.<sup>19</sup>

When not properly controlled, allergic rhinitis can evolve to chronic nasal obstruction and, consequently, mouth breathing. In addition to the characteristic clinical status, at physical examination these patients present ocular conjunctival hyperemia, dark circles, transverse nasal sulcus, and hypertrophied nasal conchae, hindering the free passage of air. Often, there is an association of allergic rhinitis with pharyngeal tonsil hypertrophy,<sup>20-22</sup> considerably worsening the respiratory condition.<sup>23,24</sup> When assessed by specific questionnaires, children with moderate to severe persistent allergic rhinitis present a higher frequency of sleep disorders than control children, especially in the domains of nocturnal respiratory disorders, daytime sleepiness, and parasomnias.<sup>25,26</sup> Additionally, there is evidence of relationship between the severity of allergic rhinitis and the intensity of sleep disorders.<sup>25,27</sup>

Cho et al. confirmed this hypothesis when studying the presence of allergic sensitization as a risk factor for more severe conditions of pharyngeal and/or palatine tonsil hypertrophy.<sup>21</sup> These authors measured allergen-specific IgE levels (sIgE) in serum and tonsillar tissue excised (during tonsil removal surgery) from 102 children who were mouth breathers and had pharyngeal tonsil hypertrophy. According to the presence or absence of sIgE, patients were divided into three groups: allergic (serum and tissue sIgE,  $n=55$ ), with local allergy (sIgE only at tissue-level,  $n=17$ ), and without allergy (absent in serum and tissue,  $n=32$ ). In total population, 70.6% of the patients were sensible to at least one allergen (serum and/or tissue). sIgE tissue levels were significantly higher than the serum levels, with a predominance of sIgE to inhalants in the pharyngeal tonsil tissue and sIgE to food in palatine tonsil. A significantly higher prevalence of asthma, allergic rhinitis, more severe symptoms, and greater consumption of relief medications were observed among allergic patients when compared with non-allergic patients. These data are unequivocal evidence that the association of allergy aggravates the allergic conditions in these patients.<sup>21</sup> However, this fact was not confirmed in patients with atopic dermatitis.<sup>23</sup>

## Sleep and growth

Respiratory sleep disorders (RSD, snoring, mouth breathing, and sleep obstructive apnea) were identified as risk factors

for growth retardation associated with chronic obstruction of the upper airways, whether due to hypertrophy of the pharyngeal and/or palatine tonsils or allergic rhinitis.<sup>28–35</sup>

Sleep is defined as a reversible state of perceptual disengagement and lack of response to the environment.<sup>36</sup> Two basic stages of sleep documented by signs of cortical activity (electroencephalogram, EEG), rapid eye movements, and muscle tone are identified in mammals: rapid-eye movement (REM) sleep, and the synchronized or non-REM sleep (NREM).<sup>36</sup>

Simply put, sleep begins at the NREM stage, which is characterized by slow rotational ocular movements, reduced muscle tone, and fragmented, low-amplitude brain activity.<sup>37</sup> This stage is composed of three phases: the first is short and transient, followed by a second phase, in which the brain activity has a larger amplitude; the third phase (deep sleep) is characterized by slow waves of great amplitude, with delta waves and release of growth hormone (GH).

The second stage, called REM sleep, is not divided into stages; it is characterized by rapid eye movements, heart and respiratory rate variations, decreased blood pressure and cerebral blood flow. The mental activity during REM sleep is associated with dreams, based on the dream memory reported after about 80% of the awakenings in this state of sleep.<sup>38,39</sup> Sleep stages occur cyclically at night with the succession of stages one to three of NREM sleep and REM sleep in cycles of 70–110 min, with increased duration of REM sleep periods and reduction of slow-wave sleep.

As previously mentioned, during the deep sleep or slow-wave (delta) sleep there is a greater release of GH-releasing hormone (GHRH) through the hypothalamus.<sup>40–42</sup> Experimental studies in animals have documented that the administration of GHRH increases NREM sleep, and the inhibition of its secretion suppresses the duration and depth of sleep.<sup>43–46</sup> Once released, GH would act in specific locations (through the GH-IGF axis), performing its different functions, among which growth. Changes in the homeostasis of the sleep process may interfere with the physiological release of this hormonal network.

## Mouth breathing and growth retardation

Evidence indicates reduced pituitary GH release in individuals with airway obstruction.<sup>46</sup> Although the cause of growth retardation is not fully understood, some of the possible explanations include low nocturnal levels of GH, lack of appetite and dysphagia that result in low caloric intake, nocturnal hypoxemia, nocturnal acidosis, and increased energy consumption after an increase in breathing work. Surgical removal of the pharyngeal and palatine tonsils has been shown to lead to resumption of normal growth for age in these children,<sup>28–31,47</sup> as well as control of allergic rhinitis.<sup>34</sup>

An experimental study with rats demonstrated that upper airway obstruction reduced the hypothalamic and serum levels of GHRH, as well as the levels of GHRH receptors.<sup>43</sup> In these animals, the waking time was increased and slow-wave sleep, paradoxical sleep, and low-activity waves were reduced. The administration of ritanserin (a selective serotonin receptor antagonist) relived these effects, *i.e.*, normalized the hypothalamic content of GHRH, decreased wavelength, increased duration and depth of slow-wave

sleep, and reduced growth retardation observed in these animals. Thus, the authors suggest that the growth retardation observed in these animals with upper airway obstruction is associated with hypothalamic GHRH.<sup>43</sup> The abnormalities in the GHRH/GH axis underlie both, and growth retardation and slow-wave sleep associated with upper airway obstruction.<sup>43</sup>

In humans, the evaluation of patients with pharyngeal and/or palatine tonsil hypertrophy has provided important insights for a better understanding of the relationship between airway obstruction and growth deficit. A systematic review, followed by meta-analysis, identified 20 studies among 211 citations evaluating the relationship between the presence of hypertrophied pharyngeal tonsils, growth, growth markers, and sleep-disordered breathing in children.<sup>35</sup> The joint review of data of more than 300 patients allowed to the authors to effectively confirm the results previously obtained. When compared with the pre-operative period, significant increases were observed in weight (minimum significant difference [MSD]=0.57; 95% CI=0.44–0.70), height (MSD=0.34; 95% CI=0.20–0.47; assessed by Z-score), and serum levels of IGF-1 (MSD=0.53; 95% CI=0.33–0.73) and IGFBP-3 (MSD=0.59; 95% CI=0.34–0.83). The authors concluded that primary care physicians and specialists must consider RSDs when caring for children with growth deficit.<sup>35</sup>

However, the lack of homogeneity in the assessed populations was a limiting factor for the observed conclusions, which lead to the development of new studies. Tatlıpınar et al. assessed IGF-1 and IGFBP-3 serum levels, as well as the relationship between the volume of pharyngeal tonsil and nasopharynx (PT/N) of patients (aged 3–10 years) with sleep apnea secondary to pharyngeal tonsil hypertrophy.<sup>48</sup> The surgical removal lead to an increase in weight, height, and serum levels of IGF-I and IGF-BP3. Nonetheless, no significant correlation was observed between the increased biomarkers and the PT/N index.<sup>48</sup>

In more recent study in pre-pubertal children aged over 5 years with a history of pharyngeal tonsil hypertrophy, after tonsil removal, a significant increase in serum IGF-1 and ghrelin levels was observed, as well as a significant increase in weight, height, and body mass index. Ghrelin is predominantly involved in the regulation of the sleep–wake cycle; it is associated with sleep deprivation and has a role in regulating metabolism. Known as the hunger hormone, it interacts with GH, leptin, and orexins in the sleep circuit regulation, emphasizing the role of energetic balance during sleep.<sup>49</sup> According to these authors, growth retardation in these children would be related to lower serum levels of IGF-1.<sup>50</sup>

## Final considerations

The nose is the organ responsible for smell, being essential to breathing, through humidification, heating, and filtering of the inhaled air; it also allows the drainage of the paranasal sinuses. The upper airways undergo major changes during childhood and pre-school age: in the first five years of life, it increases from 6% to 40% of the nasal respiratory volume of adults.<sup>51</sup>

From the first months of life onwards, due to the anatomical conditions, nasal breathing is preferred,<sup>1,52</sup> and half of the children have significant hypoxemias if the nose is congested.<sup>52</sup>

Mouth breathing can have dramatic consequences, including growth retardation, highlighting the importance of early recognition of this health problem that must be diagnosed and properly controlled through clinical or even surgical approach.

## Conflicts of interest

The authors declare no conflicts of interest.

## References

- Di Francesco RC. Respirador oral sem obstáculo das vias aéreas superiores. In: Solé D, Prado E, Weckx LL, editors. *Obstrução nasal – o direito de respirar pelo nariz*. 2nd ed. Rio de Janeiro: Atheneu; 2017. p. 69.
- Valera FC, Anselmo-Lima WT, Tamashiro E. A criança respiradora oral. In: Solé D, Prado E, Weckx LL, editors. *Obstrução nasal – o direito de respirar pelo nariz*. 2nd ed. Rio de Janeiro: Atheneu; 2017. p. 31.
- Garde JB, Suryavanshi RK, Jawale BA, Deshmukh V, Dadhe DP, Suryavanshi MK. An epidemiological study to know the prevalence of deleterious oral habits among 6 to 12-year-old children. *J Int Oral Health*. 2014;6:39–43.
- Lopes TS, Moura LF, Lima MC. Association between breastfeeding and breathing pattern in children: a sectional study. *J Pediatr (Rio J)*. 2014;90:396–402.
- Felcar JM, Bueno IR, Massan AC, Torezan RP, Cardoso JR. Prevalence of mouth breathing in children from an elementary school. *Cien Saude Colet*. 2010;15:437–44.
- Bueno DA, Grechi TH, Trawitzki LV, Anselmo-Lima WT, Felício CM, Valera FC. Muscular and functional changes following adenotonsillectomy in children. *Int J Pediatr Otorhinolaryngol*. 2015;79:537–40.
- Souza JF, Grechi TH, Anselmo-Lima WT, Sander HS, Fernandes RM, Anselmo-Lima WT, et al. Mastication and deglutition changes in children with tonsillar hypertrophy. *Braz J Otorhinolaryngol*. 2013;79:424–8.
- Vieira BB, Itikawa CE, de Almeida LA, Sander HS, Fernandes RM, Anselmo-Lima WT, et al. Cephalometric evaluation of facial pattern and hyoid bone position in children with obstructive sleep apnea syndrome. *Int J Pediatr Otorhinolaryngol*. 2011;75:383–6.
- Basheer B, Hegde KS, Bhat SS, Umar D, Baroudi K. Influence of mouth on the dental growth of children: a cephalometric study. *J Int Oral Health*. 2014;6:50–5.
- Marcus CL, Brooks LJ, Draper KA, Gozal D, Halbower AC, Jones J, et al. Diagnosis and management of childhood obstructive sleep apnea syndrome. *Pediatrics*. 2012;130:e714–55.
- Imbaud TC, Mallozi MC, Domingos VB, Solé D. Frequency of rhinitis and orofacial disorders in patients with dental malocclusion. *Rev Paul Pediatr*. 2016;34:184–8.
- Grechi TH, Trawitzki LV, Felício CM, Valera FC, Anselmo-Lima WT. Bruxism in children with nasal obstruction. *Int J Pediatr Otorhinolaryngol*. 2008;72:391–6.
- Piteo AM, Kennedy JD, Roberts RM, Martin AJ, Nettelbeck T, Kohler MJ, et al. Snoring and cognitive development in infancy. *Sleep Med*. 2011;12:981–7.
- Ribeiro GC, Santos ID, Santos AC, Paranhos LR, César CP. Influence of the breathing pattern on the learning process: a systematic review of literature. *Braz J Otorhinolaryngol*. 2016;82:466–78.
- Kuroishi RC, Garcia RB, Valera FC, Anselmo-Lima WT, Fukuda MT. Deficits in working memory, reading comprehension and arithmetic skills in children with mouth breathing syndrome: analytical cross-sectional study. *Sao Paulo Med J*. 2015;133:78–83.
- Leung LC, Ng DK, Lau MW, Chan CH, Kwok KL, Chow PY, et al. Twenty-four-hour ambulatory BP in snoring children with obstructive sleep apnea syndrome. *Chest*. 2006;130:1009–17.
- Amin R, Somers VK, McConnell K, Willging P, Myer C, Sherman M, et al. Activity-adjusted 24-hour ambulatory blood pressure and cardiac remodelling in children with sleep disordered breathing. *Hypertension*. 2008;51:84–91.
- Ait-Khaled N, Pearce N, Anderson HR, Ellwood P, Montefort S, Shah J. Global map of the prevalence of symptoms of rhinoconjunctivitis in children: the International Study of Asthma and Allergies in Childhood (ISAAC) phase three. *Allergy*. 2009;64:123–48.
- Morais-Almeida M, Santos N, Pereira AM, Branco-Ferreira M, Nunes C, Bousquet J, et al. Prevalence and classification of rhinitis in preschool children in Portugal: a nationwide study. *Allergy*. 2013;68:1278–88.
- Costa EC Jr, Sabino HA, Miura CS, Azevedo CB, Menezes UP, Valera FC, et al. Atopy and adenotonsillar hypertrophy in mouth breathers from a reference center. *Braz J Otorhinolaryngol*. 2013;79:663–7.
- Cho KS, Kim SH, Hong SL, Lee J, Mun SJ, Roh YE, et al. Local atopy in childhood adenotonsillar hypertrophy. *Am J Rhinol Allergy*. 2018;32:160–6.
- Evcimik MF, Dogru M, Cirik AA, Nepesov M. Adenoid hypertrophy in children with allergic disease and influential factors. *Int J Pediatr Otorhinolaryngol*. 2015;79:694–7.
- Alexopoulos EI, Bizakis J, Gourgoulianis K, Kaditis AG. Atopy does not affect the frequency of adenotonsillar hypertrophy and sleep apnoea in children who snore. *Acta Paediatr*. 2014;103:1239–43.
- Dogru M, Evcimik MF, Calim OF. Does adenoid hypertrophy affect disease severity in children with allergic rhinitis? *Eur Arch Otorhinolaryngol*. 2017;274:209–13.
- Loekmanwidjaja J, Carneiro A, Nishinaka M, Munhoes D, Benozoli G, Wandalsen G, et al. Sleep disorders in children with moderate to severe persistent allergic rhinitis. *Braz J Otorhinolaryngol*. 2018;84:178–84.
- Lin S, Melvin T, Boss E, Ishman S. The association between allergic rhinitis and sleep-disordered breathing in children: a systematic review. *Int Forum Allergy Rhinol*. 2013;3:504–9.
- Colás C, Galera H, Añibarro B, Navarro A, Jáuregui I, Peláez A. Disease severity impairs sleep quality in allergic rhinitis (The SOMINAR study). *Clin Exp Allergy*. 2012;42:1080–7.
- Ersoy B, Yuceturk AV, Taneli F, Urk V, Uyanik BS. Changes in growth pattern, body composition and biochemical markers of growth after adenotonsillectomy in prepubertal children. *Int J Pediatr Otorhinolaryngol*. 2005;69:1175–81.
- Gumussoy M, Atmaca S, Bilgici B, Unal R. Changes in IGF-I, IGFBP-3 and ghrelin levels after adenotonsillectomy in children with sleep disordered breathing. *Int J Pediatr Otorhinolaryngol*. 2009;73:1653–6.
- Yilmaz MD, Hosal AS, Oguz H, Yordam N, Kaya S. The effects of tonsillectomy and adenoidectomy on serum IGF-I and IGFBP3 levels in children. *Laryngoscope*. 2002;112:922–5.
- Kiris M, Muderris T, Celebi S, Cankaya H, Bercin S. Changes in serum IGF-1 and IGFBP-3 levels and growth in children following adenoidectomy, tonsillectomy or adenotonsillectomy. *Int J Pediatr Otorhinolaryngol*. 2010;74:528–31.
- Mauras N, Haymond MW. Are the metabolic effects of GH and IGF-I separable? *Growth Horm IGF Res*. 2005;15:19–27.

- 439 33. Sant'Anna CA, Solé D, Naspitz CK. Short stature in children with  
440 respiratory allergy. *Pediatr Allergy Immunol.* 1996;7:187-92. 473
- 441 34. Baum WF, Schneyer U, Lantzsch AM, Kloditz E. Delay of growth  
442 and development in children with bronchial asthma, atopic  
443 dermatitis and allergic rhinitis. *Exp Clin Endocrinol Diabetes.*  
444 2002;110:53-9. 474
- 445 35. Bonuck KA, Freeman K, Henderson J. Growth and growth  
446 biomarker changes after adenotonsillectomy: systematic  
447 review and meta-analysis. *Arch Dis Child.* 2009;94:83-91. 475
- 448 36. Carskadon M, Dement W. Normal human sleep: an overview. In:  
449 Kryger MH, Roth T, Dement WC, editors. *Principles and practice  
450 of sleep medicine.* 3rd ed. Philadelphia, PA: W.B. Saunders Co.;  
451 2000. p. 15-25. 476
- 452 37. Silber MH, Ancoli-Israel S, Bonnet MH, Chokroverty S, Grigg-  
453 Damberger MM, Hirshkowitz M, et al. The visual scoring of sleep  
454 in adult. *J Clin Sleep Med.* 2007;3:121e31. 477
- 455 38. Obál F Jr, Krueger JM. Biochemical regulation of non-rapid-eye-  
456 movement sleep. *Front Biosci.* 2003;8:d520e50. 478
- 457 39. García-García F, Acosta-Peña E, Venebra-Muñoz A, Murillo-  
458 Rodríguez E. Sleep inducing factors. *CNS Neurol Disord Drug  
459 Targets.* 2009;8:235e44. 479
- 460 40. Clinton JM, Davis CJ, Zielinski MR, Jewett KA, Krueger JM. Bio-  
461 chemical regulation of sleep and sleep biomarkers. *J Clin Sleep  
462 Med.* 2011;7:538e42. 480
- 463 41. Van Cauter E, Kerkhofs M, Caufriez A, Van Onderbergen A,  
464 Thorner MO, Copinschi G. A quantitative estimation of growth  
465 hormone secretion in normal man: reproducibility and rela-  
466 tion to sleep and time of day. *J Clin Endocrinol Metab.*  
467 1992;74:1441-50. 481
- 468 42. Steiger A, Guldner J, Hemmeter U, Rothe B, Wiedemann K,  
469 Holsboer F. Effects of growth hormone-releasing hormone and  
470 somatostatin on sleep EEG and nocturnal hormone secretion in  
471 male controls. *Neuroendocrinology.* 1992;56:566-73. 482
- 472 43. Tarasiuk A, Berdugo-Boura N, Troib A, Segev Y. Role of growth  
473 hormone-releasing hormone in sleep and growth impairments  
474 induced by upper airway obstruction in rats. *Eur Respir J.*  
475 2011;38:870-7. 476
- 476 44. Obál F Jr, Payne L, Kapás L, Opp M, Krueger JM. Inhi-  
477 bition of growth hormone-releasing factor suppresses both  
478 sleep and growth hormone secretion in the rat. *Brain Res.*  
479 1991;557:149-53. 480
- 480 45. Zhang J, Obál F Jr, Zheng T, Fang J, Taishi P, Krueger JM.  
481 Intrapreoptic microinjection of GHRH or its antagonist alters  
482 sleep in rats. *J Neurosci.* 1999;19:2187-94. 483
- 482 46. Obál F Jr, Krueger JM. GHRH and sleep. *Sleep Med Rev.*  
483 2004;8:367-77. 484
- 484 47. GH Research Society. Consensus guidelines for the diagnosis and  
485 treatment of growth hormone deficiency in childhood and ado-  
486 lescence: summary statement of the GH Research Society. *J Clin  
487 Endocrinol Metab.* 2000;85:3990-3. 488
- 488 48. Tatlipinar A, Atalay S, Esen E, Yılmaz G, Köksal S, Gökçeer T. The  
489 effect of adenotonsillectomy on serum insulin-like growth fac-  
490 tors and the adenoid/nasopharynx ratio in pediatric patients: a  
491 blind, prospective clinical study. *Int J Pediatr Otorhinolaryngol.*  
492 2012;76:248-52. 492
- 493 49. García-García F, Juárez-Aguilar E, Santiago-García J, Cardinali  
494 DP. Ghrelin and its interactions with growth hormone, leptin and  
495 orexins: implications for the sleep-wake cycle and metabolism.  
496 *Sleep Med Rev.* 2014;18:89-97. 496
- 497 50. Moghaddam YJ, Goltzari SE, Saboktakin L, Seyedashrafi MH,  
498 Sabermarouf B, Gavgani HA, et al. Does adenotonsillectomy  
499 alter IGF-1 and ghrelin serum levels in children with adenoton-  
500 sillar hypertrophy and failure to thrive? A prospective study. *Int  
501 J Pediatr Otorhinolaryngol.* 2013;77:1541-4. 501
- 502 51. West KS, McNamara JA Jr. Changes in the craniofacial complex  
503 from adolescence to midadulthood: a cephalometric study. *Am  
504 J Orthod Dentofacial Orthop.* 1999;115:521-32. 502
- 505 52. Sohal M, Schoem SR. Disorders of the neonatal nasal cavity:  
506 fundamental for practice. *Sem Fet Neonatal Med.* 2016;21:  
507 263-9. 505