

SYSPLIT CASSETTE 12 EVO HP Q

Item no. 314688

Document type: **Product card**

Document date: **2017-12-14**

Generated by: **Systemair Online Catalogue**

Description

Features

SYSPLIT CASSETTE EVO air conditioners are ideal solution for creating a comfortable climate in the office and shopping centers – in all rooms designed with false ceilings.

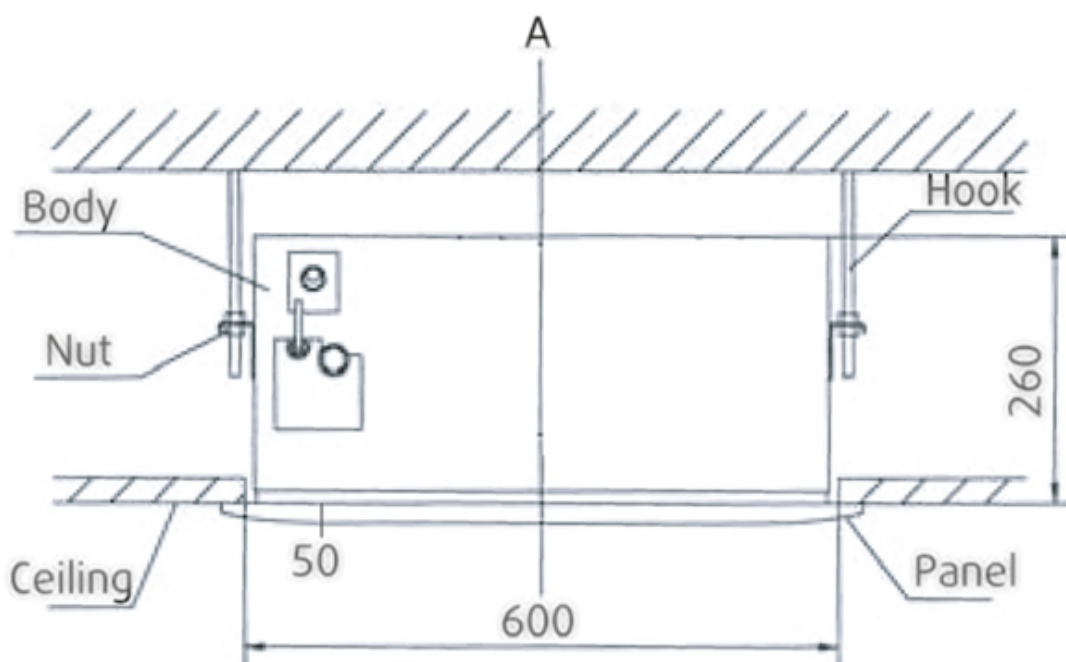
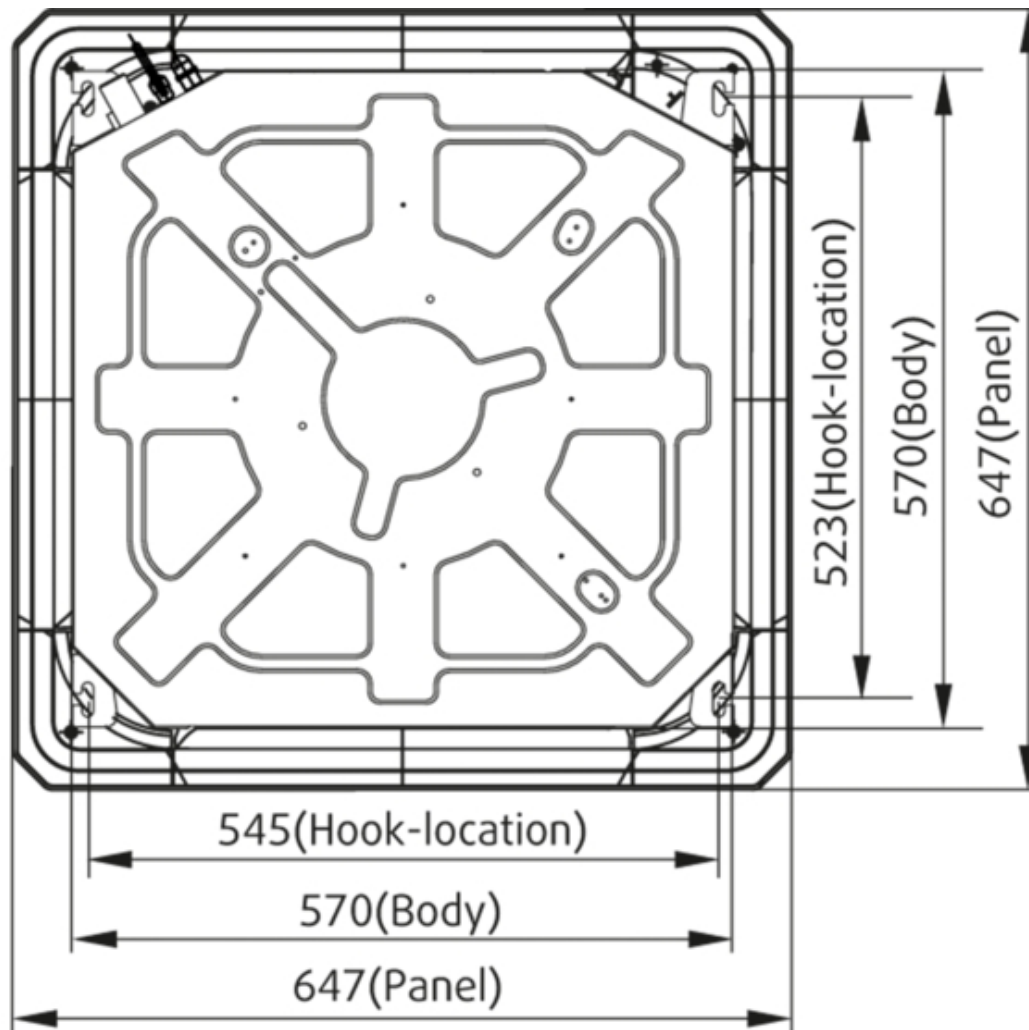
- Advanced DC fan inverter.
- Available with 2 different sizes: 57x57 for models 12 and 18, 84x84 for models 24 to 60.
- The 360° round flow panel assures an optimal air distribution and comfort in the room.
- Special aerodynamic shape of the fan and the geometry of the blades ensure low noise from the air conditioner.
- Washable air filter included in the panel greatly simplifies the maintenance.
- The panel is equipped with an interactive LCD.
- Built-in drain pump with lift height up to 500 mm for models 12-18, and up to 750 mm for models 24 to 60.
- Fresh air intake can fulfill air quality requirements and enhance occupants comfort.
- The on/off and alarm contacts, as well as the network port for centralized and BMS gateway, allow a remote control of the split system.
- Infrared remote controller RM 52 included; Wired remote WC 29 or WC 120 available as accessory.



Technical parameters

Cooling capacity	3520	W
Heating capacity	4100	W
Voltage	230	V
Frequency	50	Hz
Phase	1	~
Current	0.18	A
Power consumption cooling	40	W
Power consumption heating	40	W

Dimensions




	07	09	12	18
A	260	260	260	260
H	>290	>290	>290	>290


Accessories


Documentation

 [SYSPLIT CASSETTE 07-18_Installation Manual_EN.pdf \(2,03MB\)](#)

 [SYSPLIT CASSETTE_DUCT_CEILING_User Manual_EN.pdf \(2,78MB\)](#)

 [RM 52_Nordic UM.pdf \(814,11kB\)](#)

 [WC 29_OM EN.pdf \(723,22kB\)](#)

 [WC 120G_UM.pdf \(948,53kB\)](#)