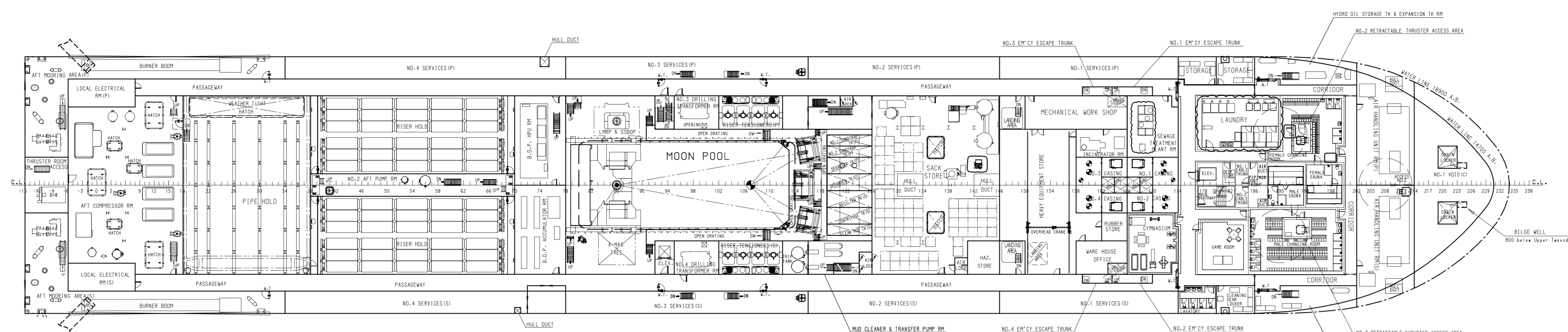


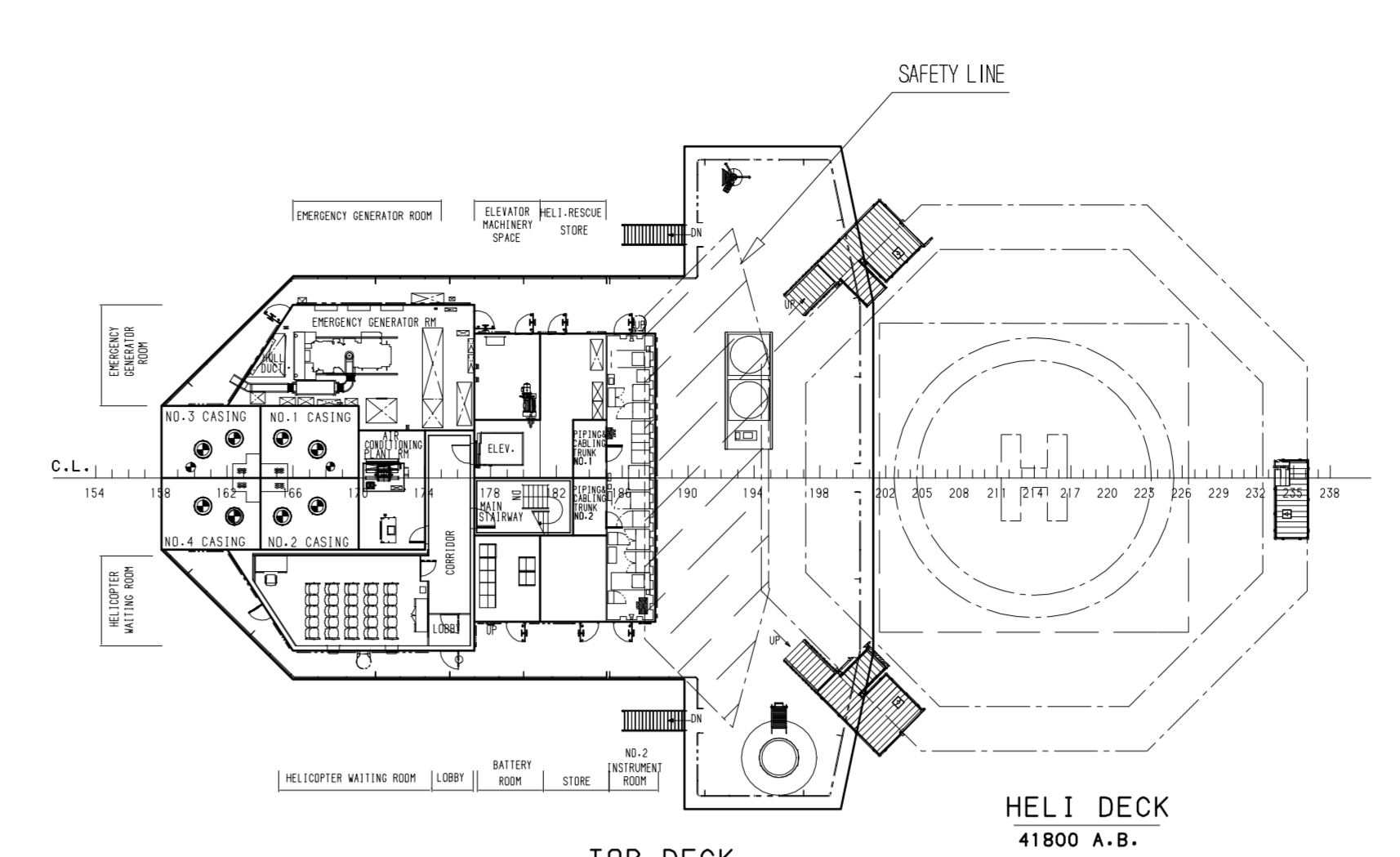


**PLAN HISTORY**

DATE	REV.	DESCRIPTION	DWN.	CHKD.	APPR.
2010.12.20	01	CRASH BY OFFSHORE BASIC DESIGN TEAM	D.J.KANG	D.J.KANG	S.J.LEE

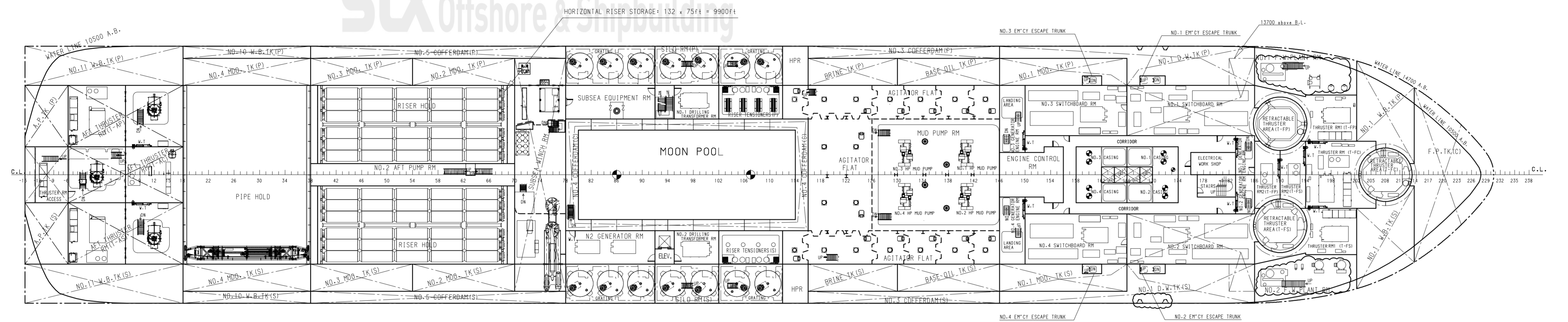


PLAN VIEW UPPER TWEENDECK  
14700 A.B.

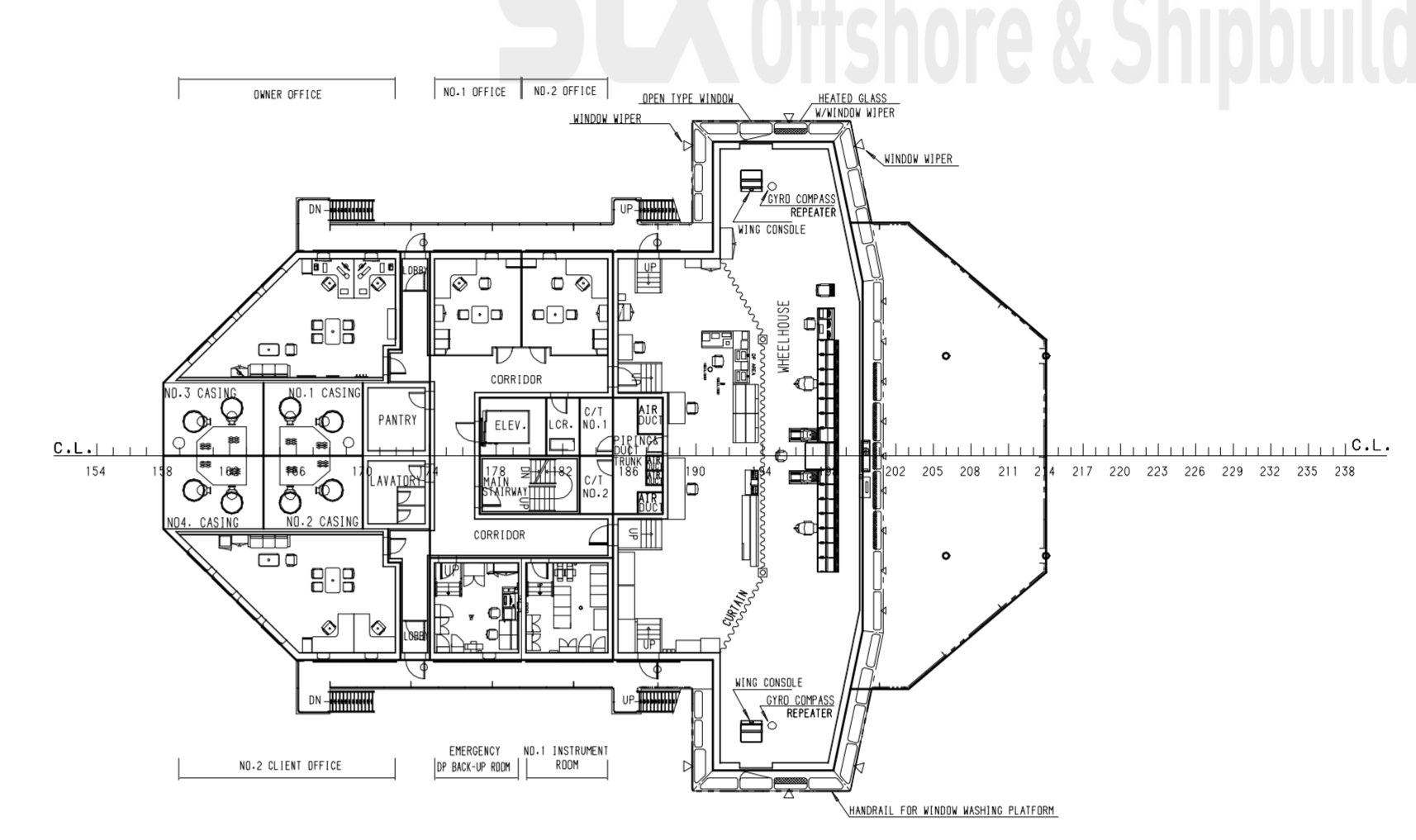


TOP DECK  
38300 A.B.

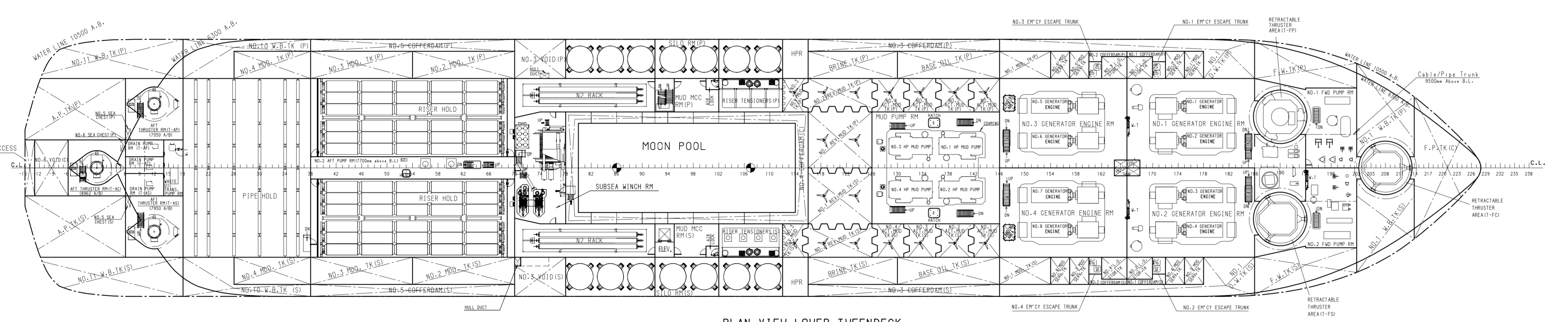
HEL1 DECK  
41800 A.B.



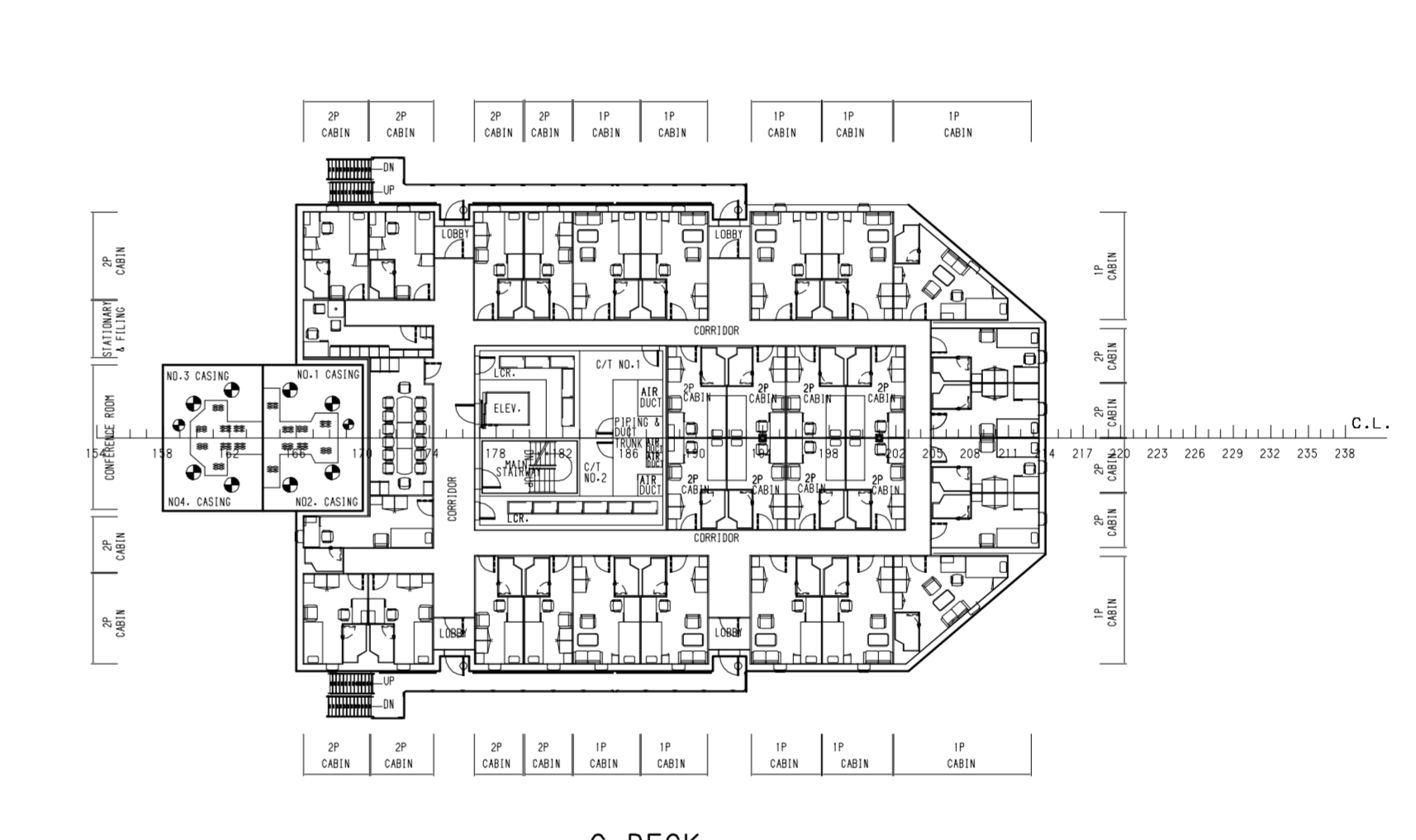
PLAN VIEW MIDDLE TWEENDECK  
10500 A.B.



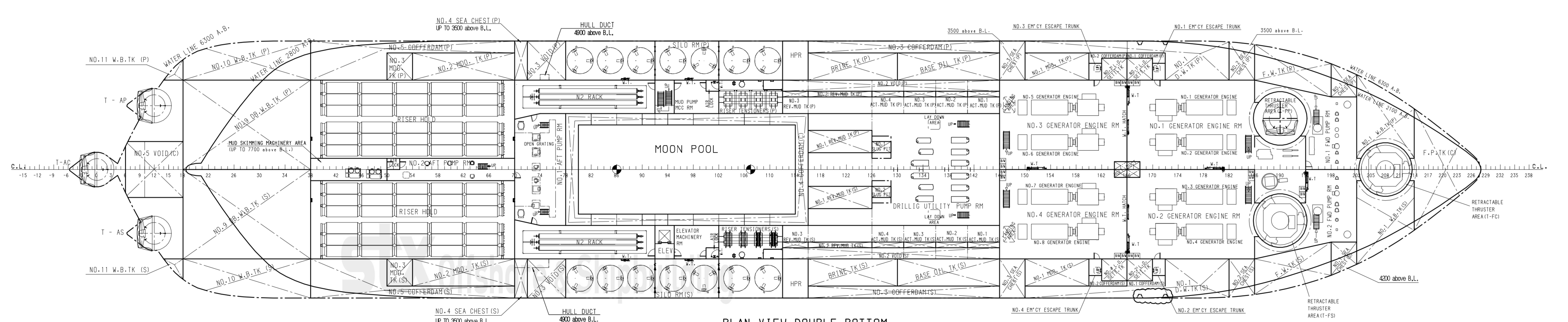
NAVIGATION DECK  
34000 A.B.



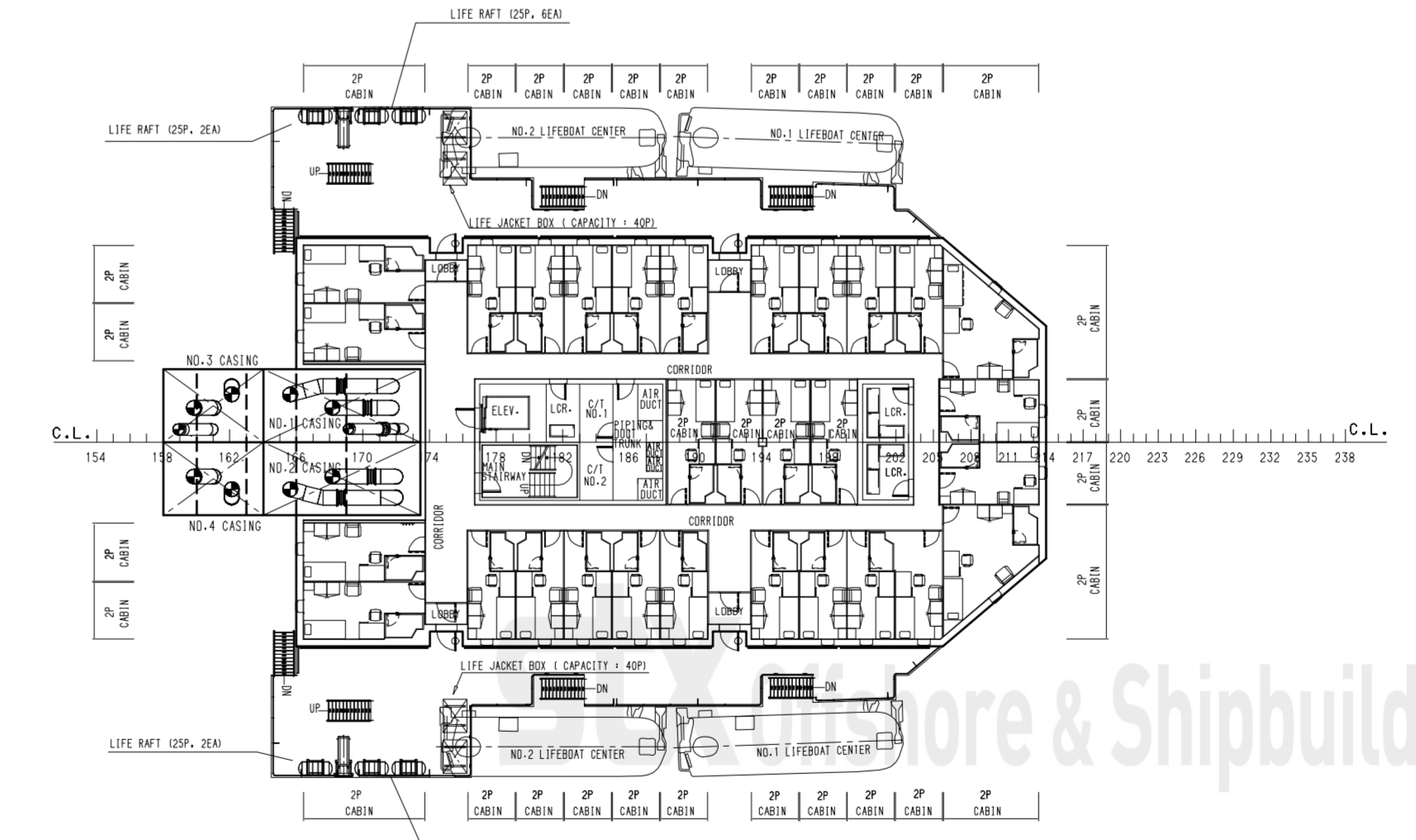
PLAN VIEW LOWER TWEENDECK  
6300 A.B.



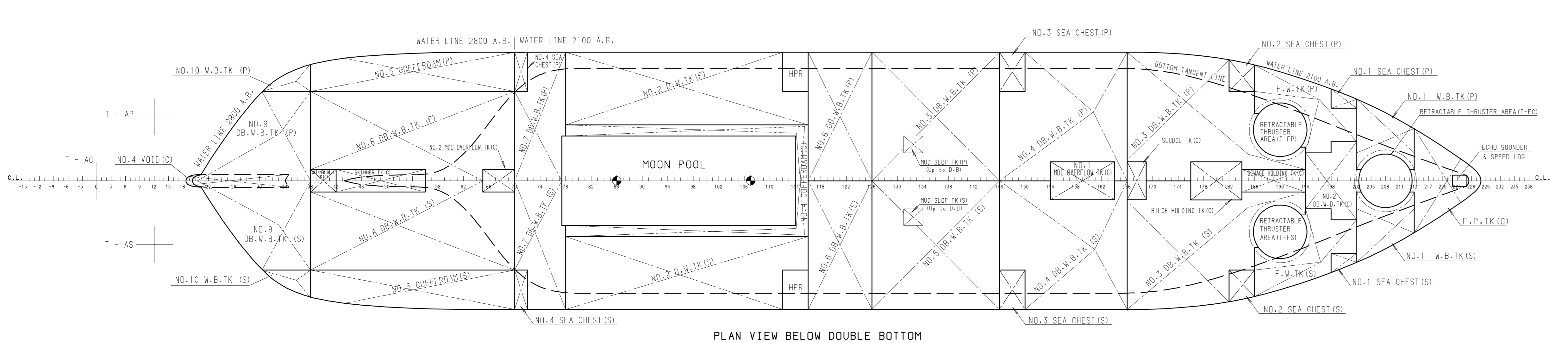
C-DECK  
31000 A.B.



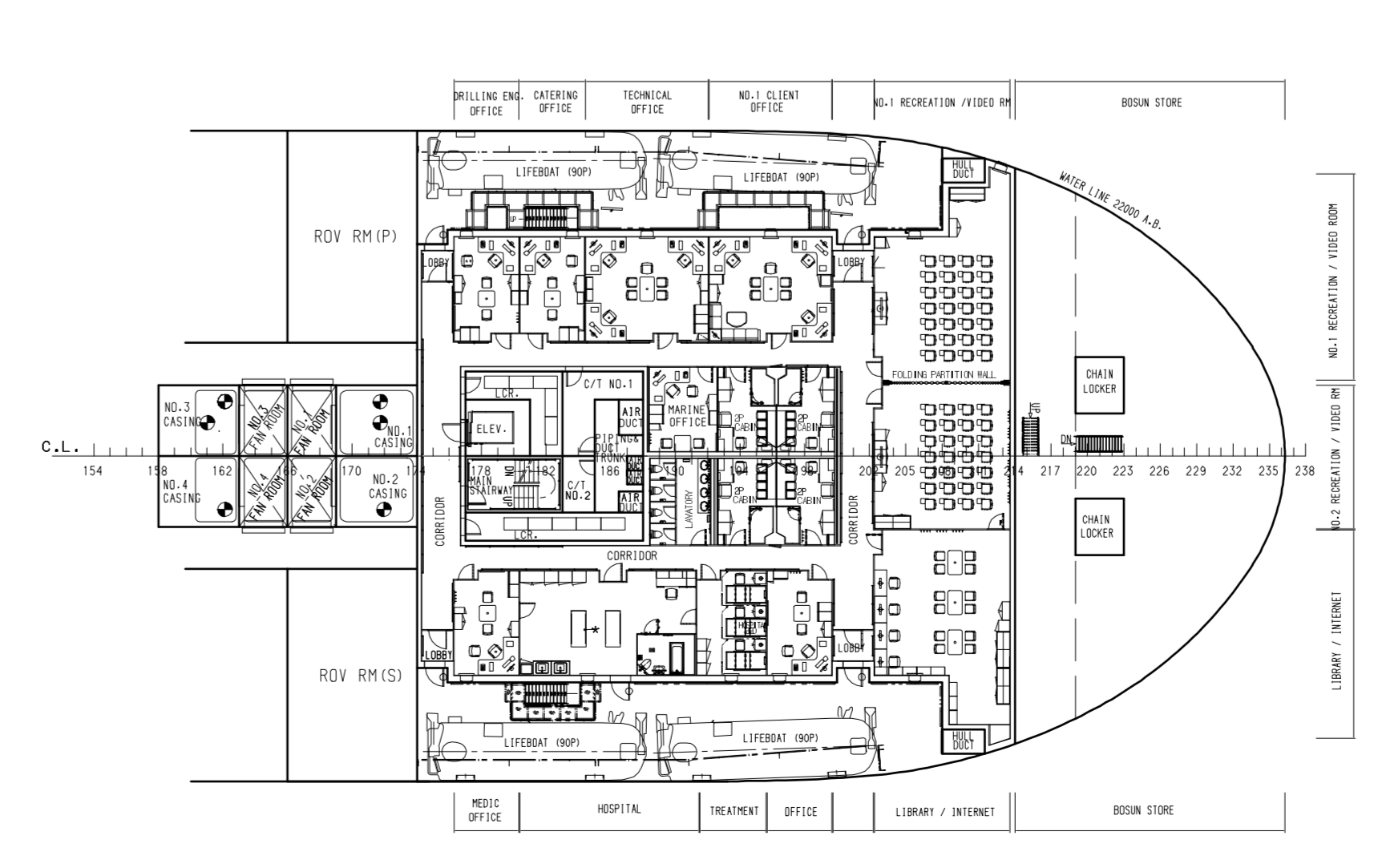
PLAN VIEW DOUBLE BOTTOM  
2100/2800 A.B.



B-DECK  
28000 A.B.



PLAN VIEW BELOW DOUBLE BOTTOM  
BELOW 2100/2800 A.B.



UPPER-DECK  
22000 A.B.

**PRINCIPAL PARTICULARS**

LENGTH O.A.	Appx. 189.0 M	619.0 ft
LENGTH B.P.	173.56 M	569.4 ft
BREADTH (MLD)	32.2 M	106.0 ft
DEPTH TO MAIN DECK (MLD)	18.9 M	62.0 ft
DEPTH TO SUBSTRUCTURE (MLD)	23.8 M	78.0 ft
DRAFT Design (MLD)	12.0 M	39.4 ft
Scantling (MLD)	12.2 M	40.0 ft

**CLASS ABS**

⊕A1, ⊕Drillship  
Ice Class 1A, ⊕AMS, ⊕ACQU, ⊕DPS-3, RW

FLAG Liberian  
COMPLEMENT 180 Persons

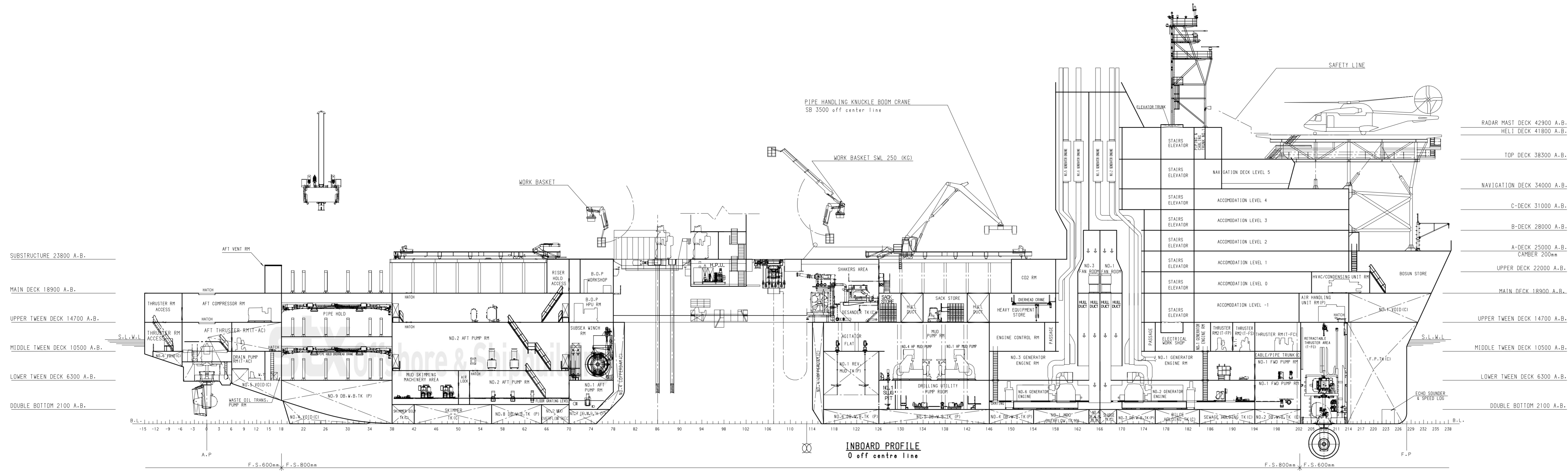
**NOTE**

1. THE ARRANGEMENT IS THE SAME AS M4001 EXCEPT MARKED ITEMS.

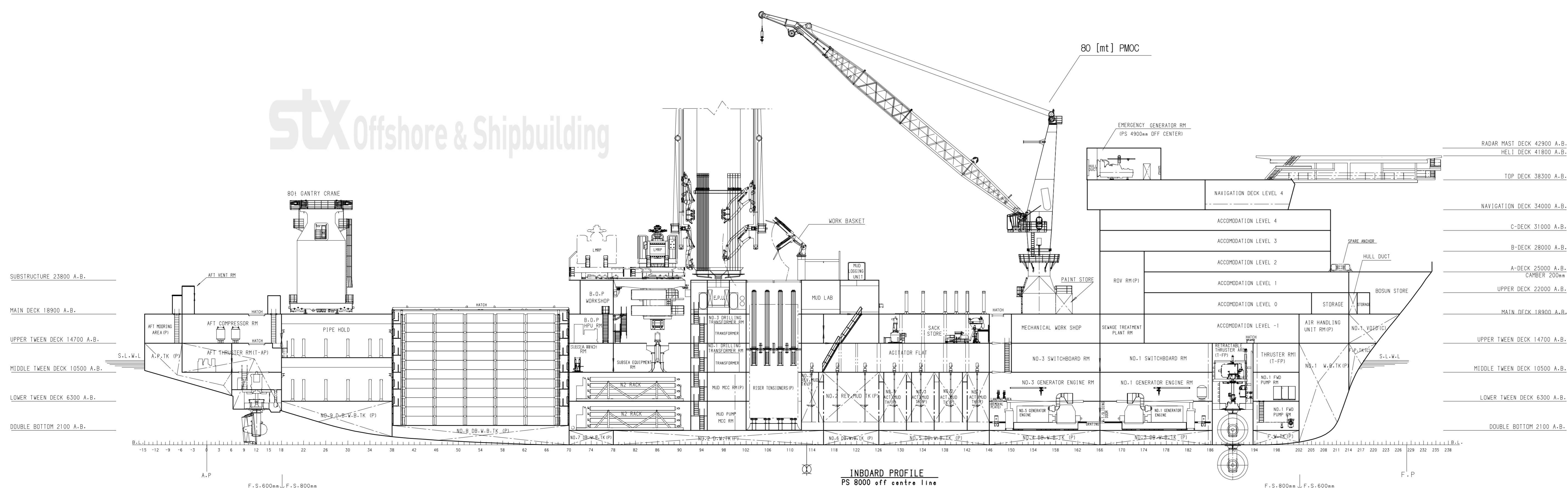
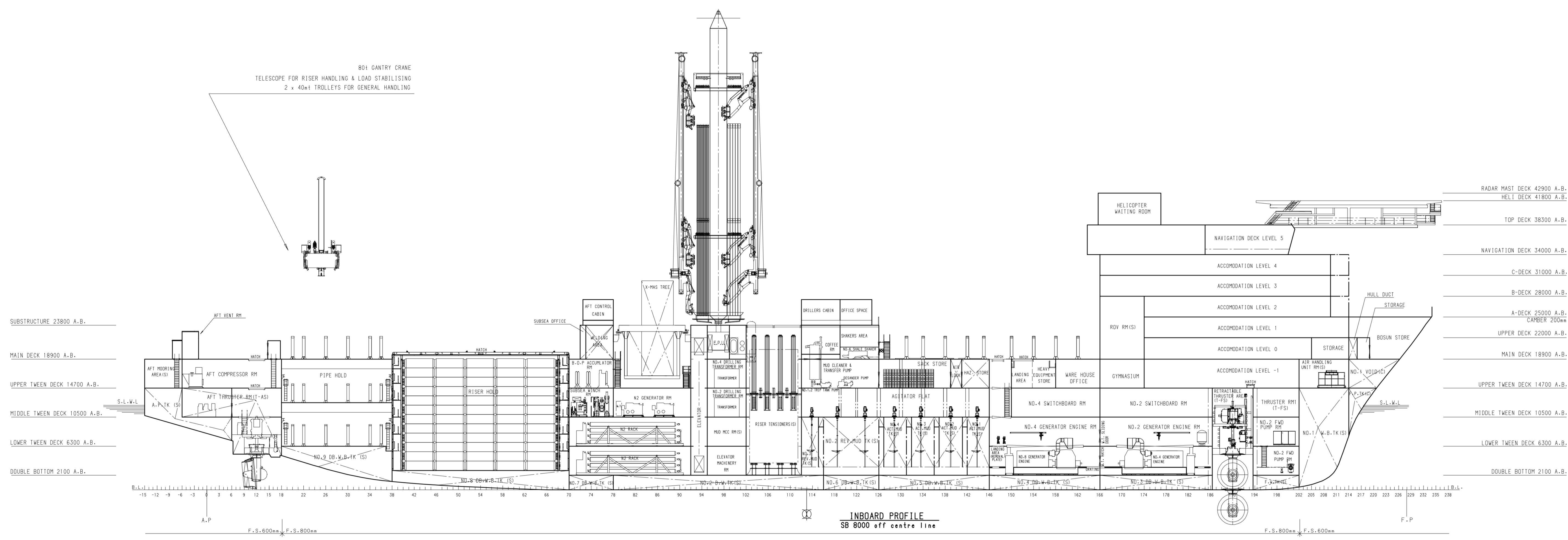
THIS DRAWING OR DOCUMENT IS THE PROPERTY OF STX OFFSHORE & SHIPBUILDING, AND MUST NOT BE PARTIALLY OR WHOLLY COPIED OR USED FOR ANY OTHER PURPOSE WITHOUT PRIOR WRITTEN PERMISSION OF STX OFFSHORE & SHIPBUILDING.

	MODEL NO.	F1004	
	TYPE	MOBILE GLOBE TROTTER	
MANAGER	S.H.LEE	TITLE	
CHECKED	D.J.KANG	PREL. GENERAL ARRANGEMENT (2/4)	
DRAWN	D.W.KWAK	SCALE	DATE
DEPT	OFFSHORE BASIC DESIGN TEAM	1:300(0)	2010.12.20
		DWG. NO.	REV. NO.
		80170000	7/0

PLAN HISTORY				
DATE	REV.	DESCRIPTION	DWN.	CHKD.
2010.12.20	01	DRAWN BY OFFSHORE BASIC DESIGN TEAM	D.J.KWAK	D.J.KWAK, S.H.LEE



STX Offshore & Shipbuilding



STX Offshore & Shipbuilding

PRINCIPAL PARTICULARS

LENGTH O.A.	Appx. 189.0 M	619.0 ft
LENGTH B.P.	173.56 M	569.4 ft
BREADTH (MLD)	32.2 M	106.0 ft
DEPTH TO MAIN DECK (MLD)	18.9 M	62.0 ft
DEPTH TO SUBSTRUCTURE (MLD)	23.8 M	78.0 ft
DRAFT Design (MLD)	12.0 M	39.4 ft
Scantling (MLD)	12.2 M	40.0 ft

CLASS ABS  
 A1, E, Drillship  
 Ice Class 1A, AMS, ACQU, DPS-3, RW

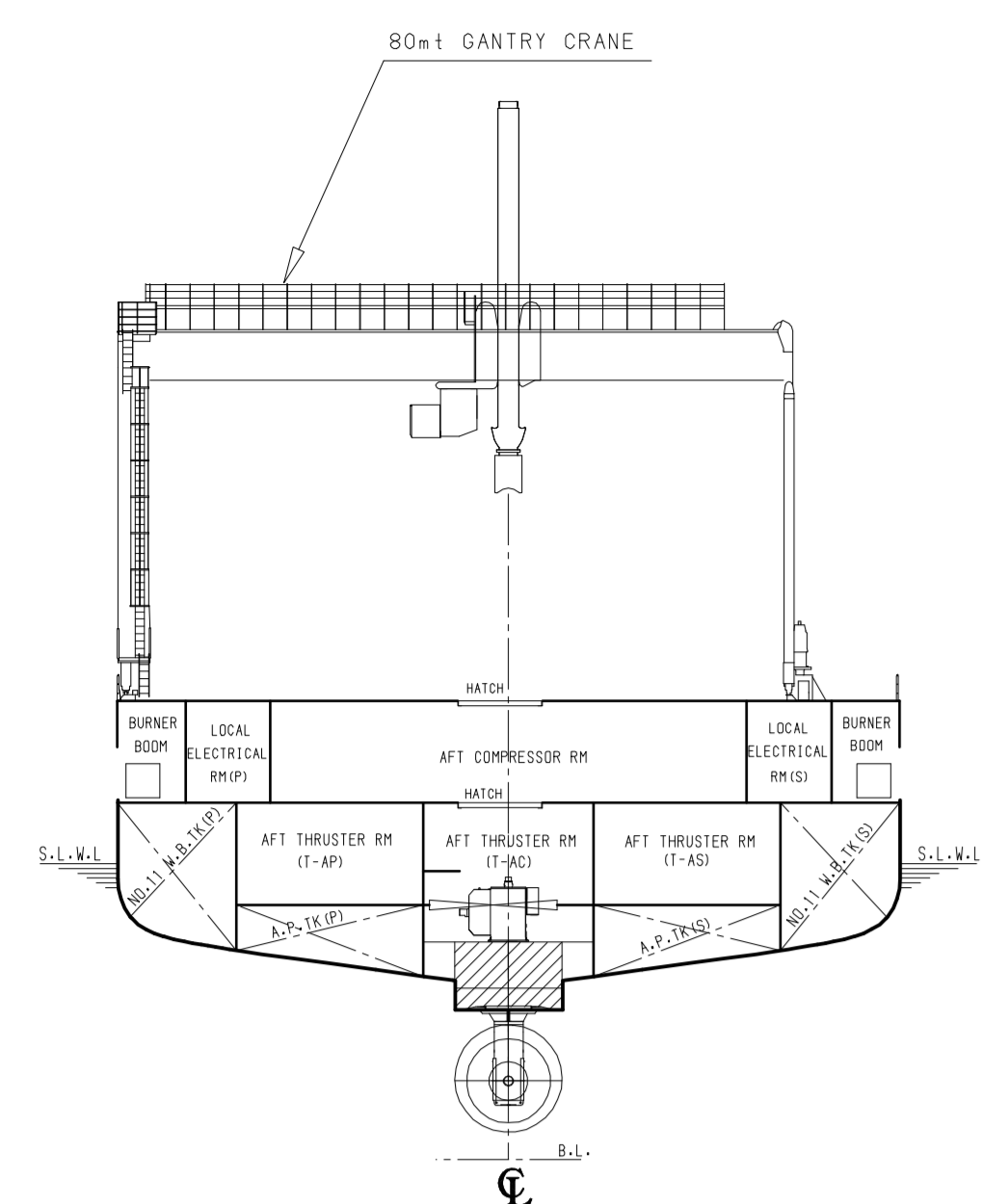
FLAG Liberian  
 COMPLEMENT 180 Persons

NOTE  
 1. THE ARRANGEMENT IS THE SAME AS IM001 EXCEPT MARKED ITEMS.

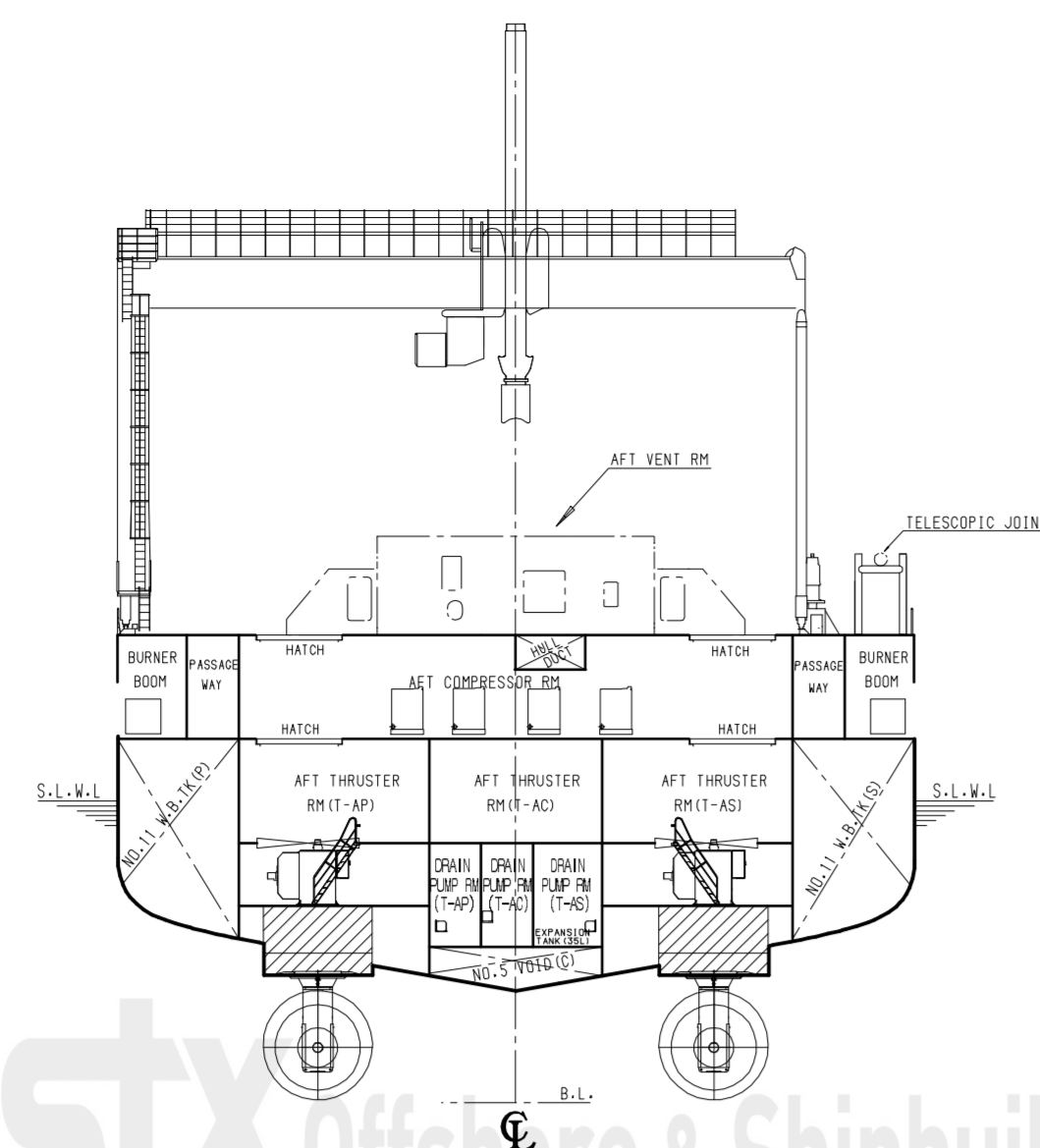
	MODEL NO. F1004
TYPE	MOBILE GLOBE TROTTER
MANAGER S.H.LEE	TITLE
CHECKED D.J.KWAK	PREL. GENERAL ARRANGEMENT(3/4)
DRAWN D.W.KWAK	
TEL. NO. +82 2 310 2093	SCALE
DEPT. OFFSHORE BASIC DESIGN TEAM	DATE 2010.12.20
	DWG. NO. 80170000
	REV. NO. 01
	STX Offshore & Shipbuilding

PLAN HISTORY

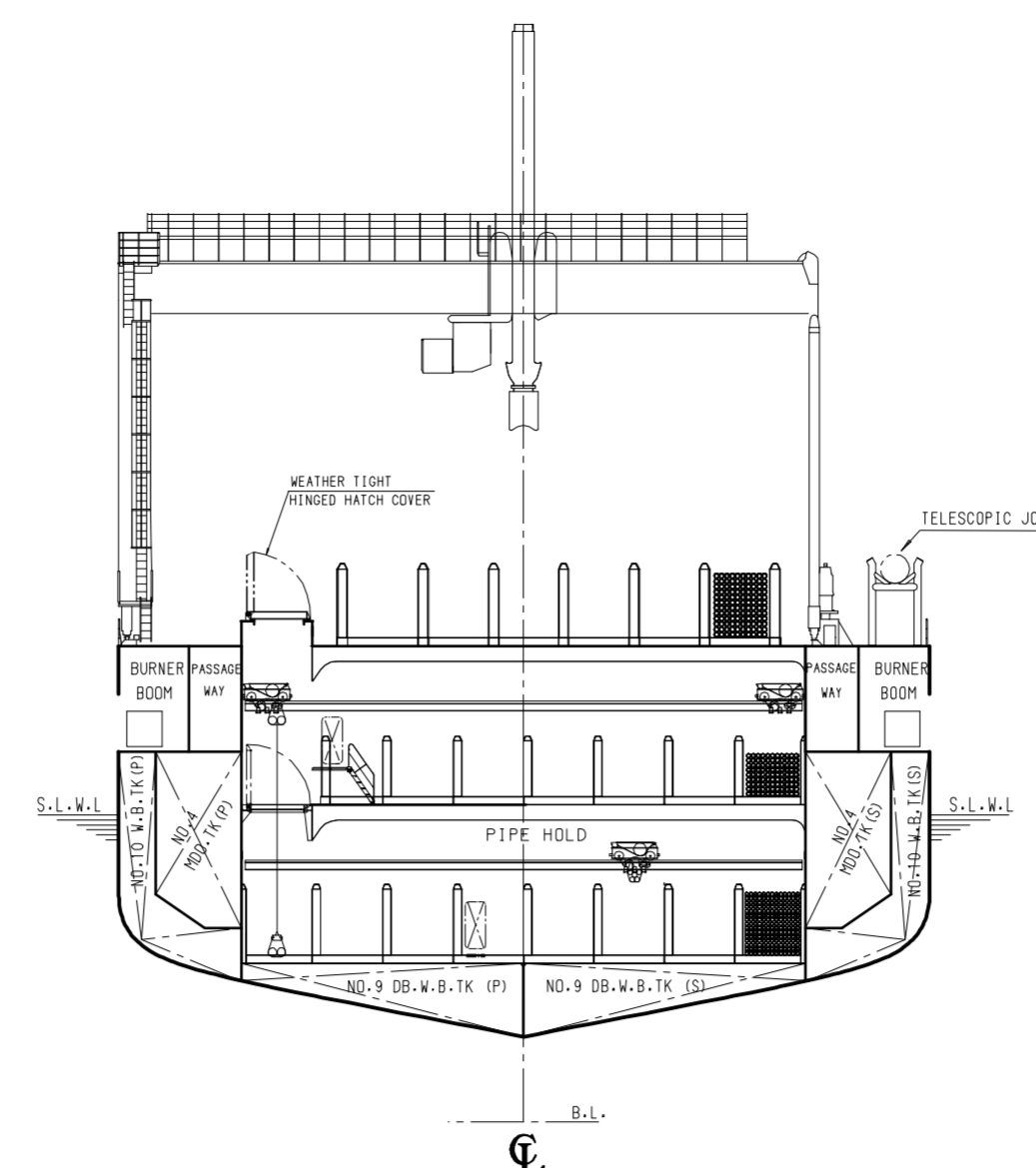
DATE	REV.	DESCRIPTION	DWN.	CHKD.	MR.
2010.12.20	01	DRAWN BY OFFSHORE BASIC DESIGN TEAM	D.J.KANG	D.J.KANG	S.H.LEE



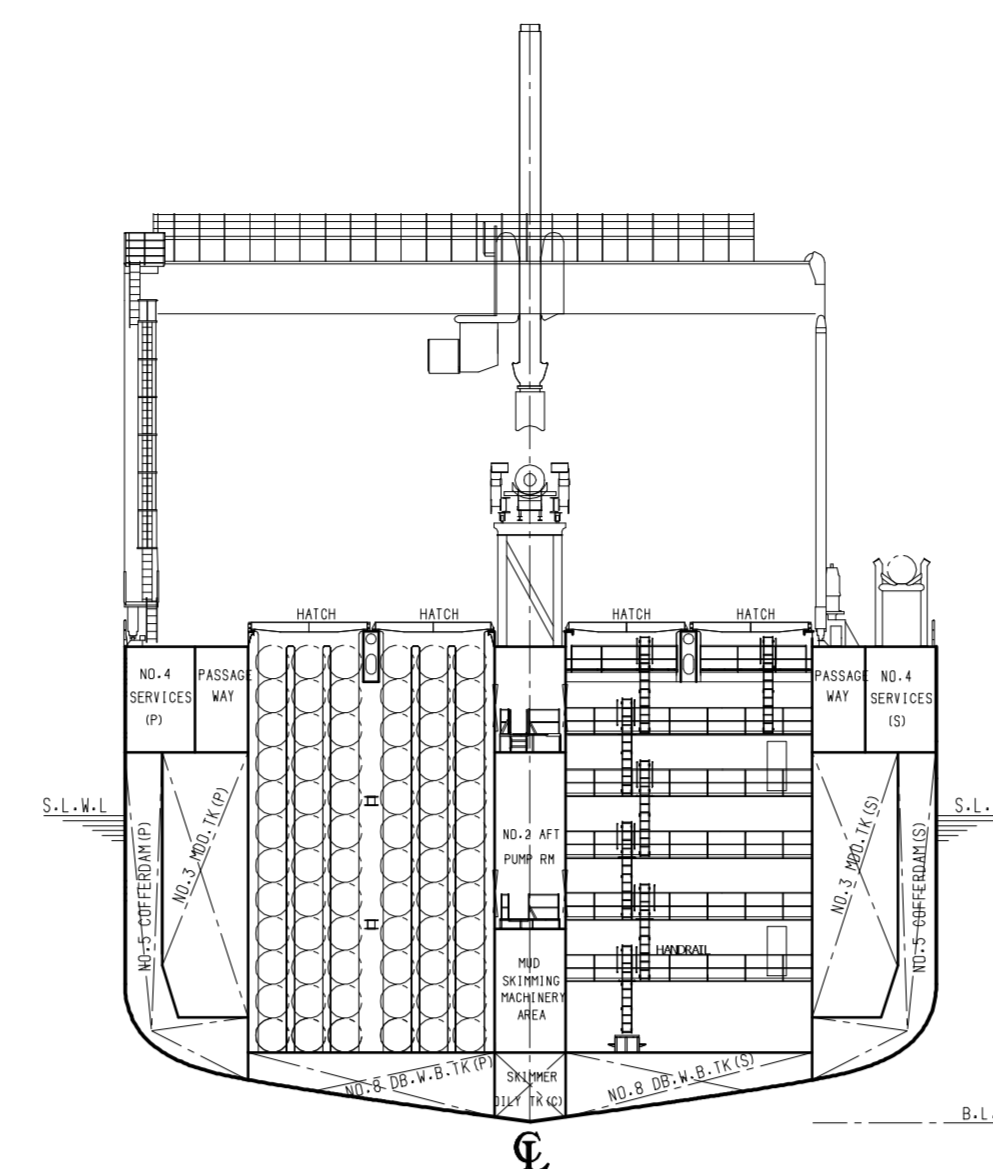
TRANSVERSE SECTION FR.0



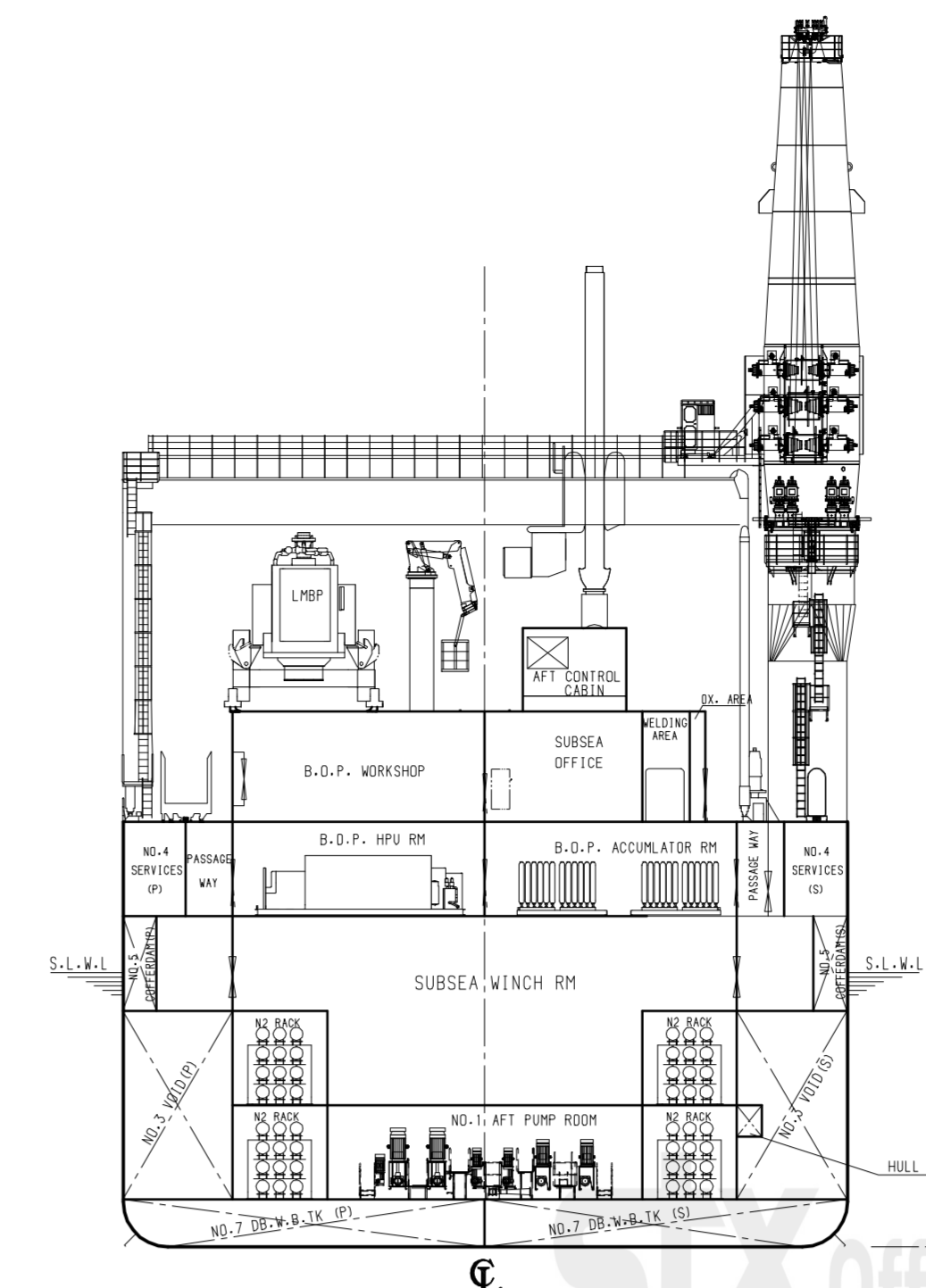
TRANSVERSE SECTION FR.12



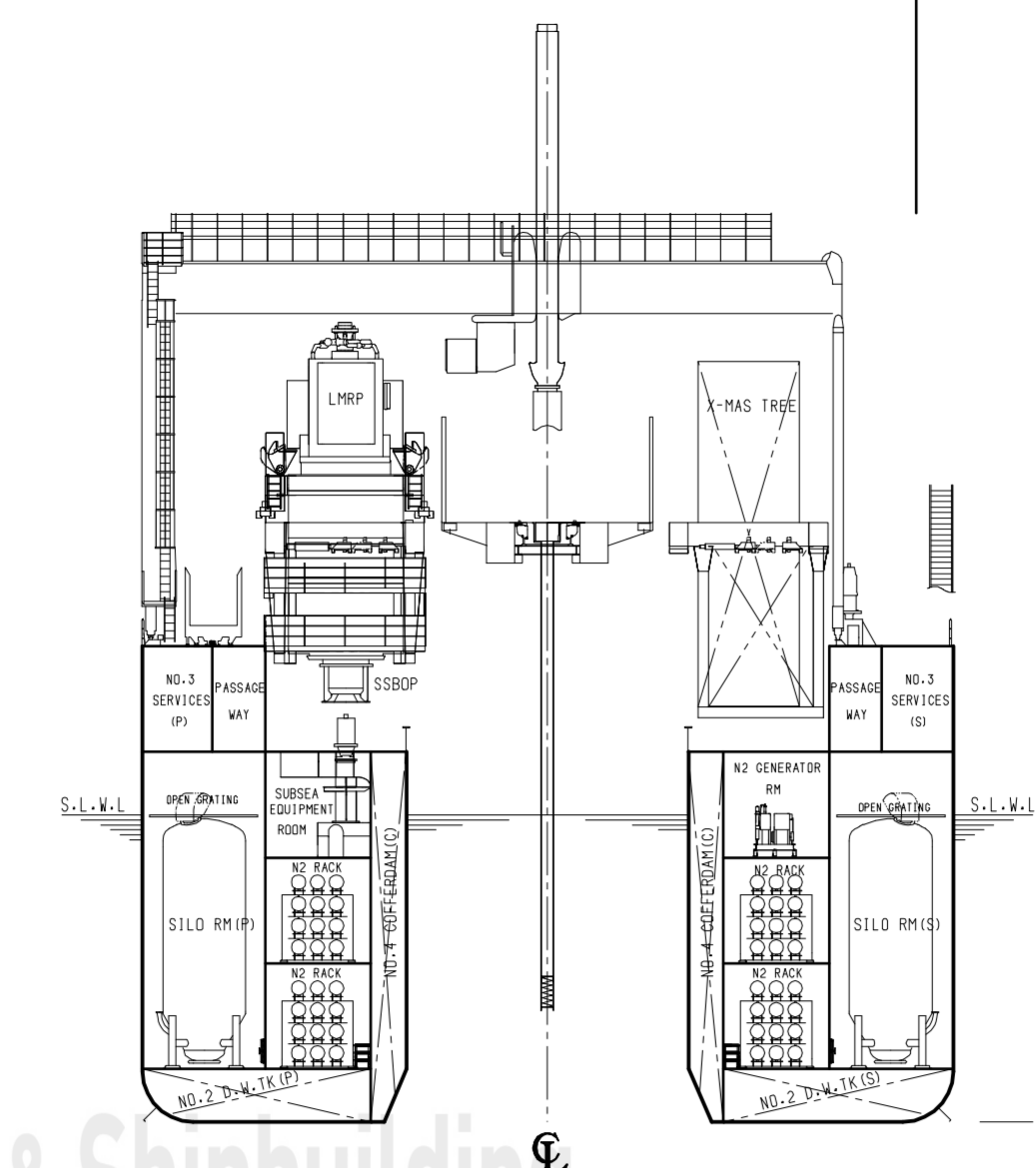
TRANSVERSE SECTION FR.18 (FWD)



TRANSVERSE SECTION FR.38 (FWD)



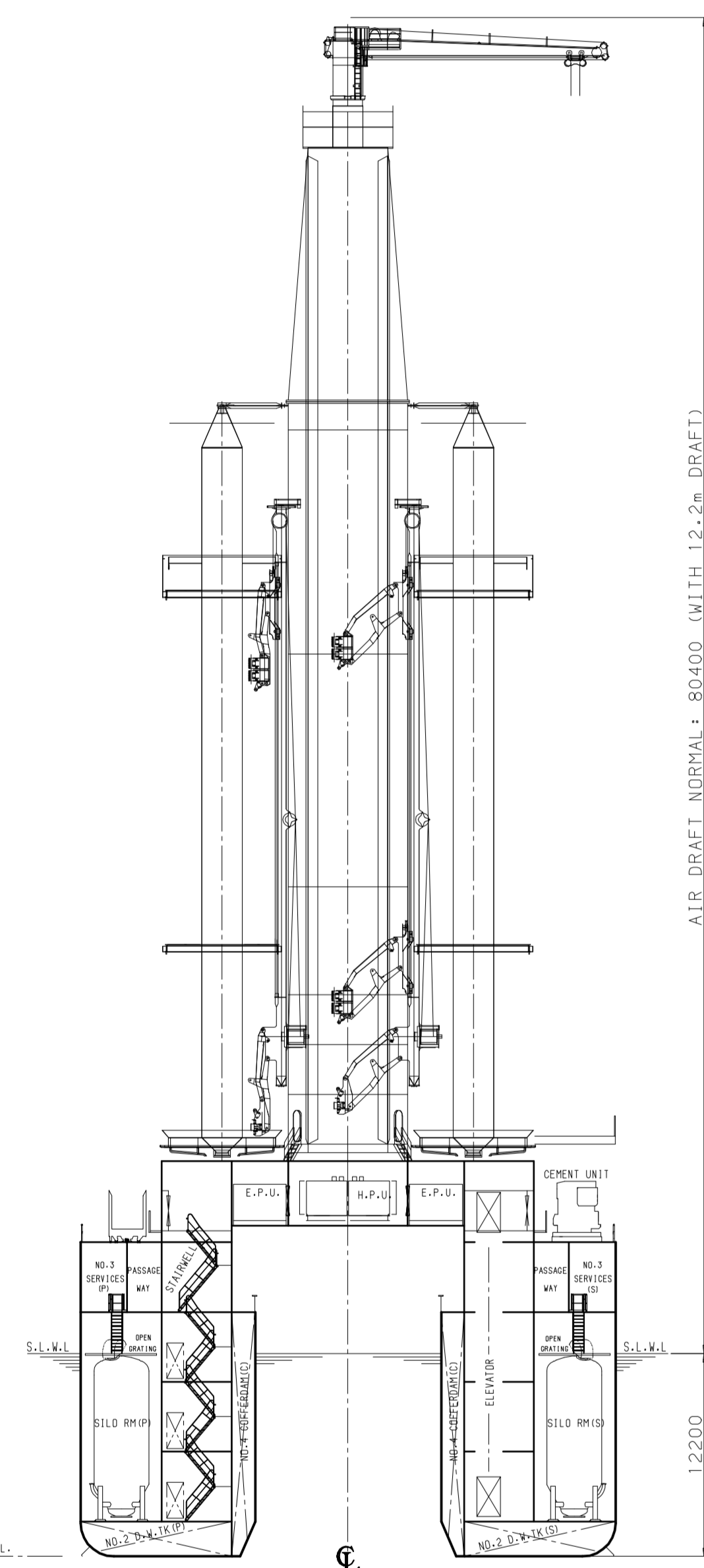
TRANSVERSE SECTION FR.74



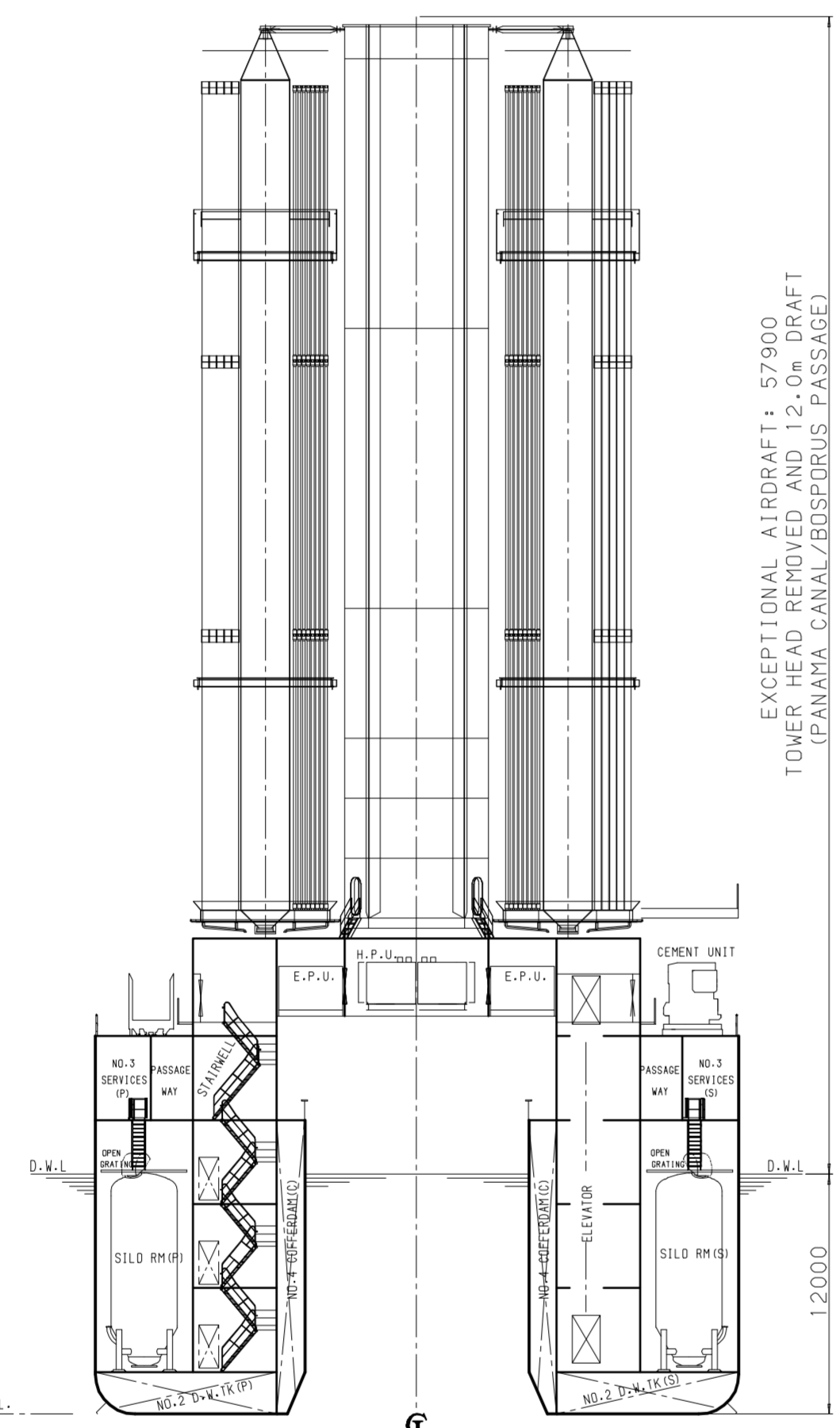
TRANSVERSE SECTION FR.86

STX Offshore & Shipbuilding

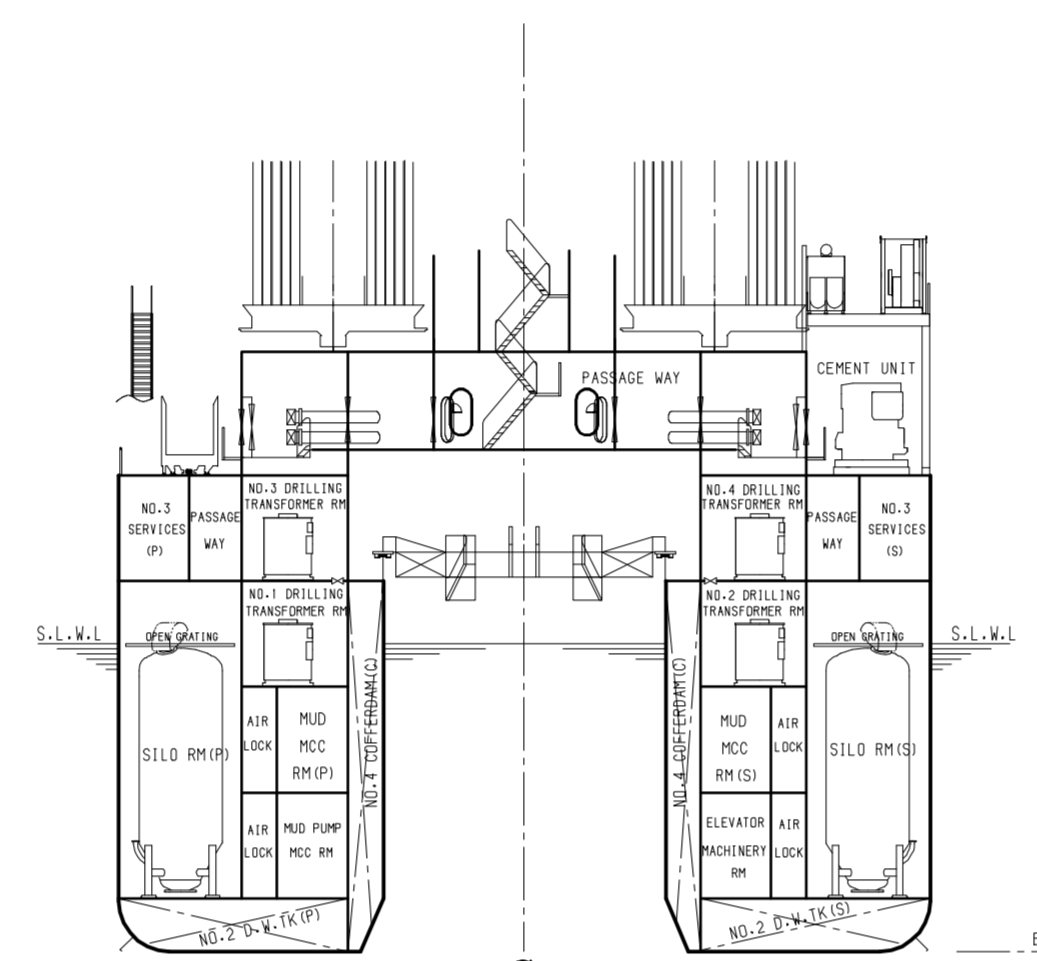
STX Offshore & Shipbuilding



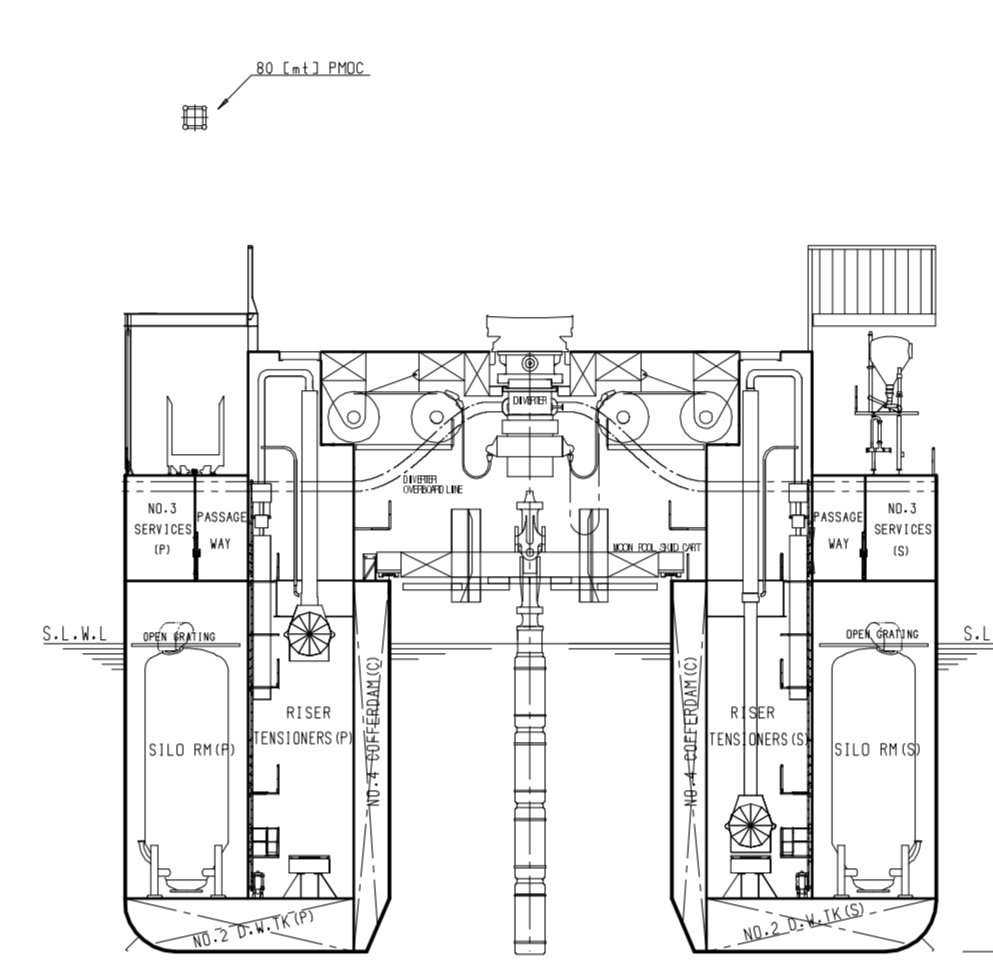
TRANSVERSE SECTION FR.94



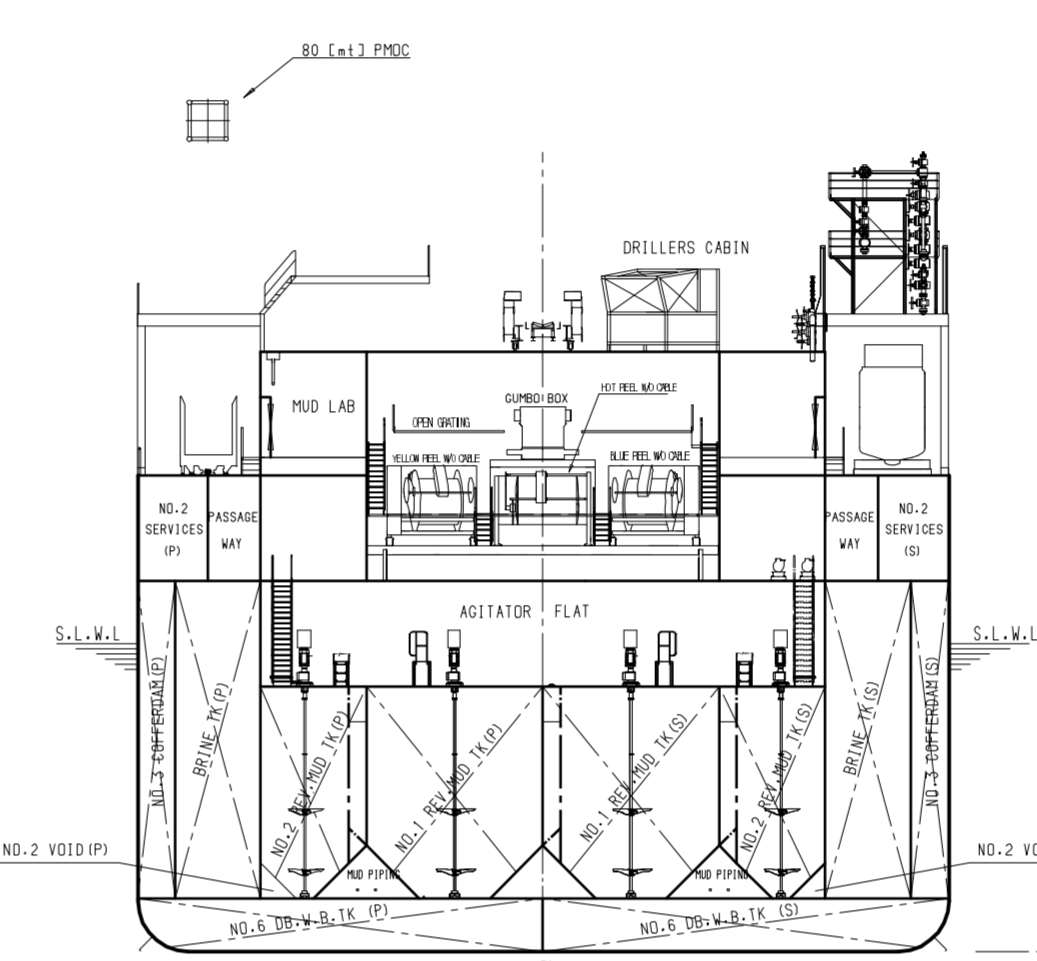
TRANSVERSE SECTION FR.94



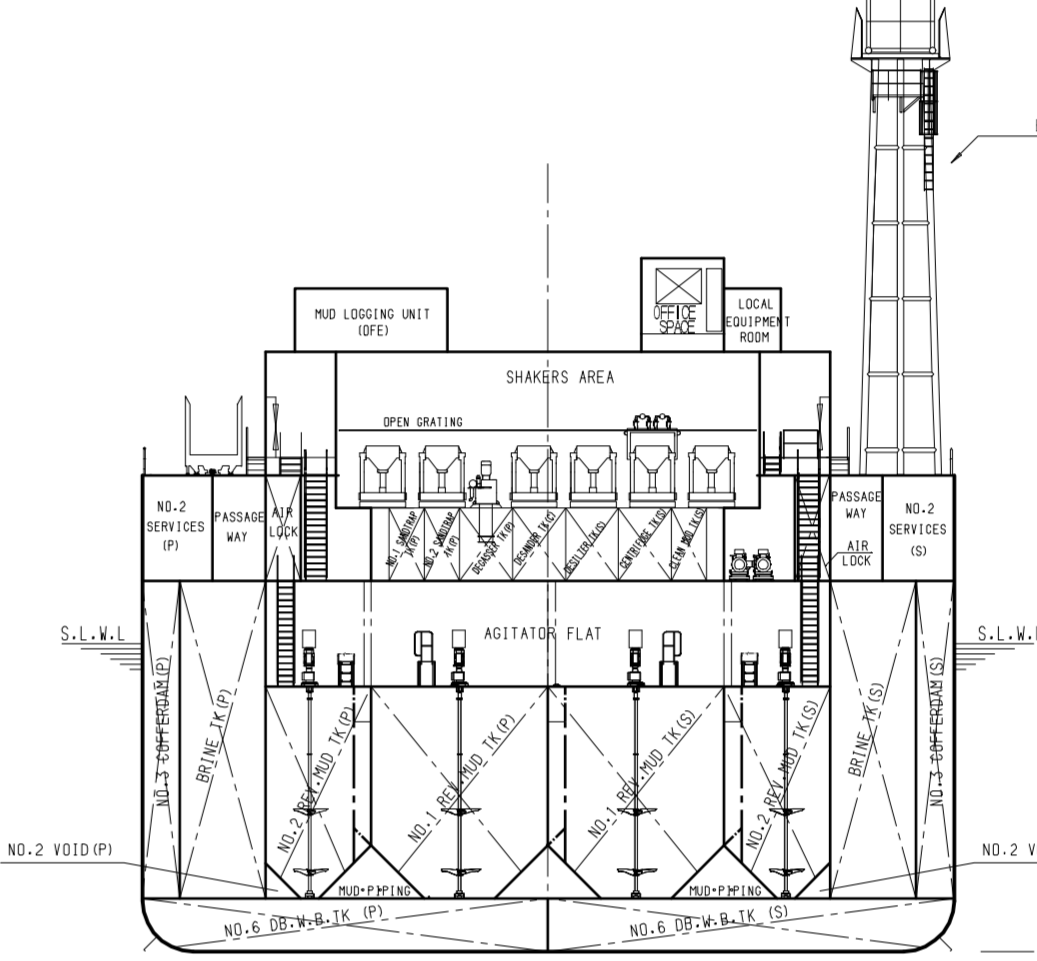
TRANSVERSE SECTION FR.100



TRANSVERSE SECTION FR.107



TRANSVERSE SECTION FR.116



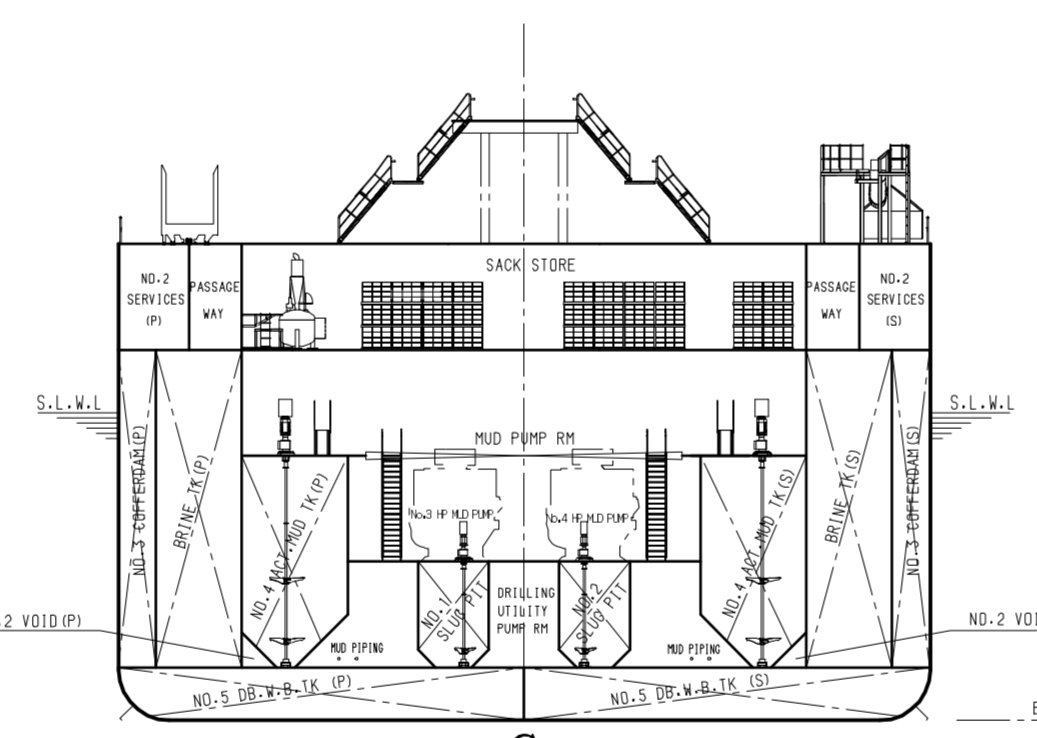
TRANSVERSE SECTION FR.119

AIR DRAFT NORMAL L. 80400 (WITH 12.2m DRAFT)

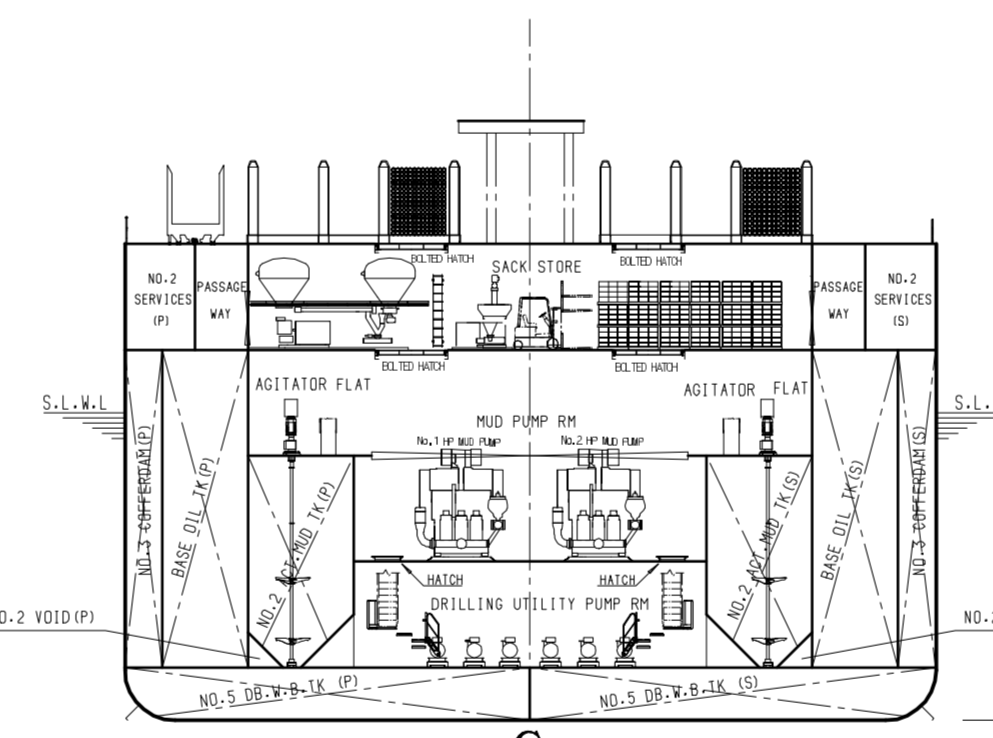
EXCEPTIONAL AIR DRAFT: 87000 (WITH HEAD REMOVED AND 12.0m DRAFT (PANAMA CANAL/BELSHUBUS PASSAGE))

12200

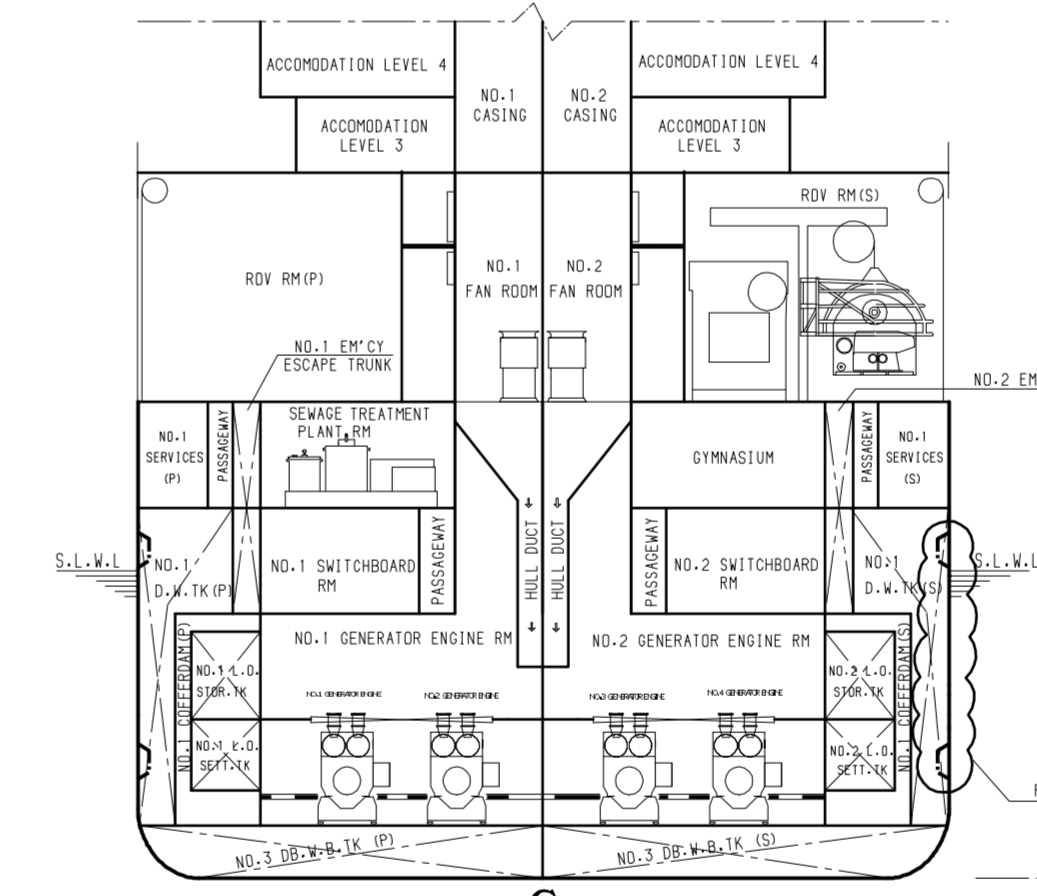
12000



TRANSVERSE SECTION FR.127



TRANSVERSE SECTION FR.136



TRANSVERSE SECTION FR.169

PRINCIPAL PARTICULARS

LENGTH O.A.	Appx. 189.0 M	619.0 ft
LENGTH B.P.	173.56 M	569.4 ft
BREADTH (MLD)	32.2 M	106.0 ft
DEPTH TO MAIN DECK (MLD)	18.9 M	62.0 ft
DEPTH TO SUBSTRUCTURE (MLD)	23.8 M	78.0 ft
DRAFT Design (MLD)	12.0 M	39.4 ft
Scantling (MLD)	12.2 M	40.0 ft

CLASS ABS

A1, E, Drillship  
Ice Class 1A, AMS, ACCU, DPS-3, RW

FLAG Liberian  
COMPLEMENT 180 Persons

NOTE

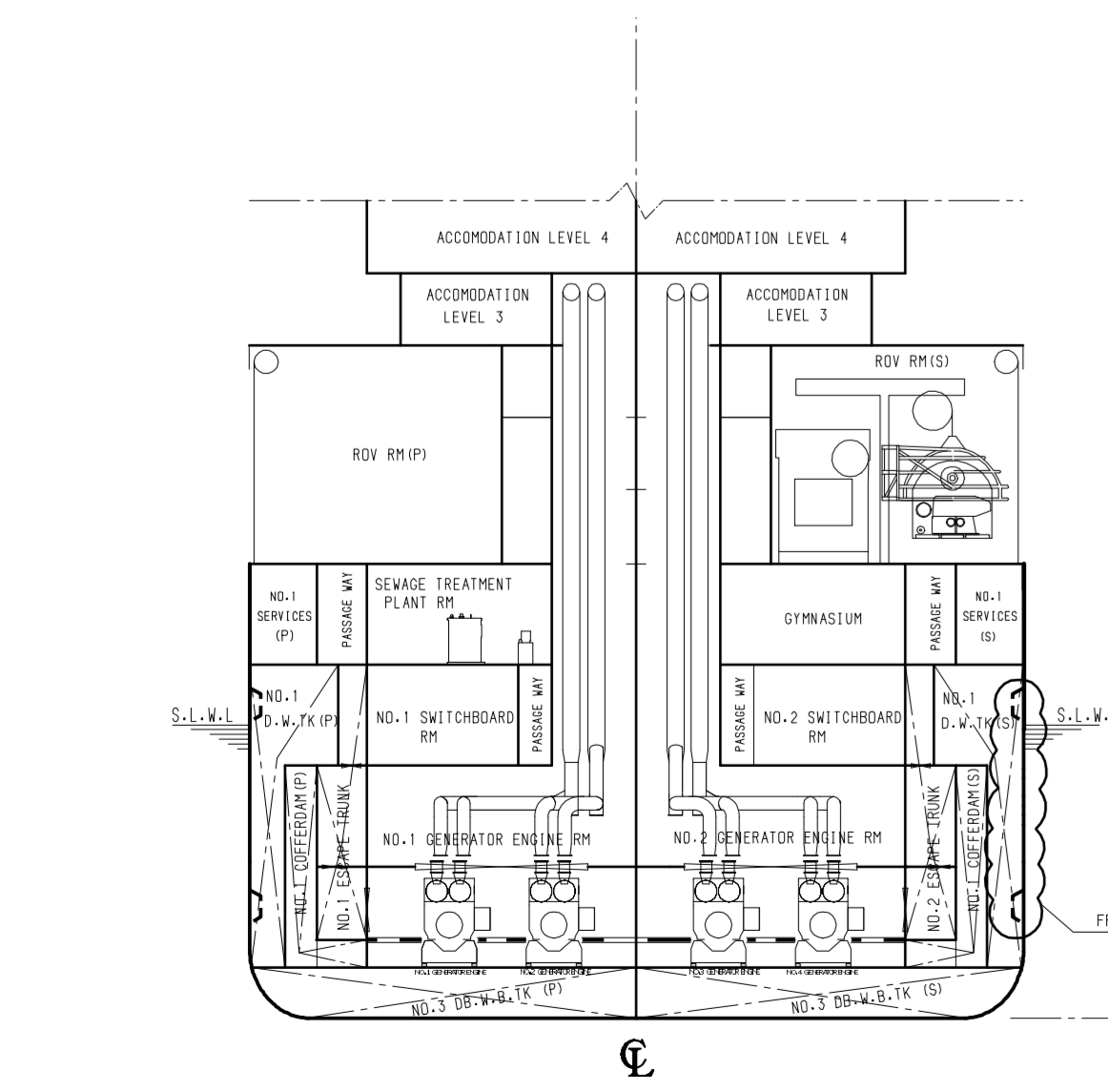
1. THE ARRANGEMENT IS THE SAME AS M4001 EXCEPT MARKED ITEMS.

THIS DRAWING OR DOCUMENT IS THE PROPERTY OF STX OFFSHORE & SHIPBUILDING, AND MUST NOT BE PARTIALLY OR WHOLLY COPIED OR USED FOR ANY OTHER PURPOSE WITHOUT PRIOR WRITTEN PERMISSION OF STX OFFSHORE & SHIPBUILDING.

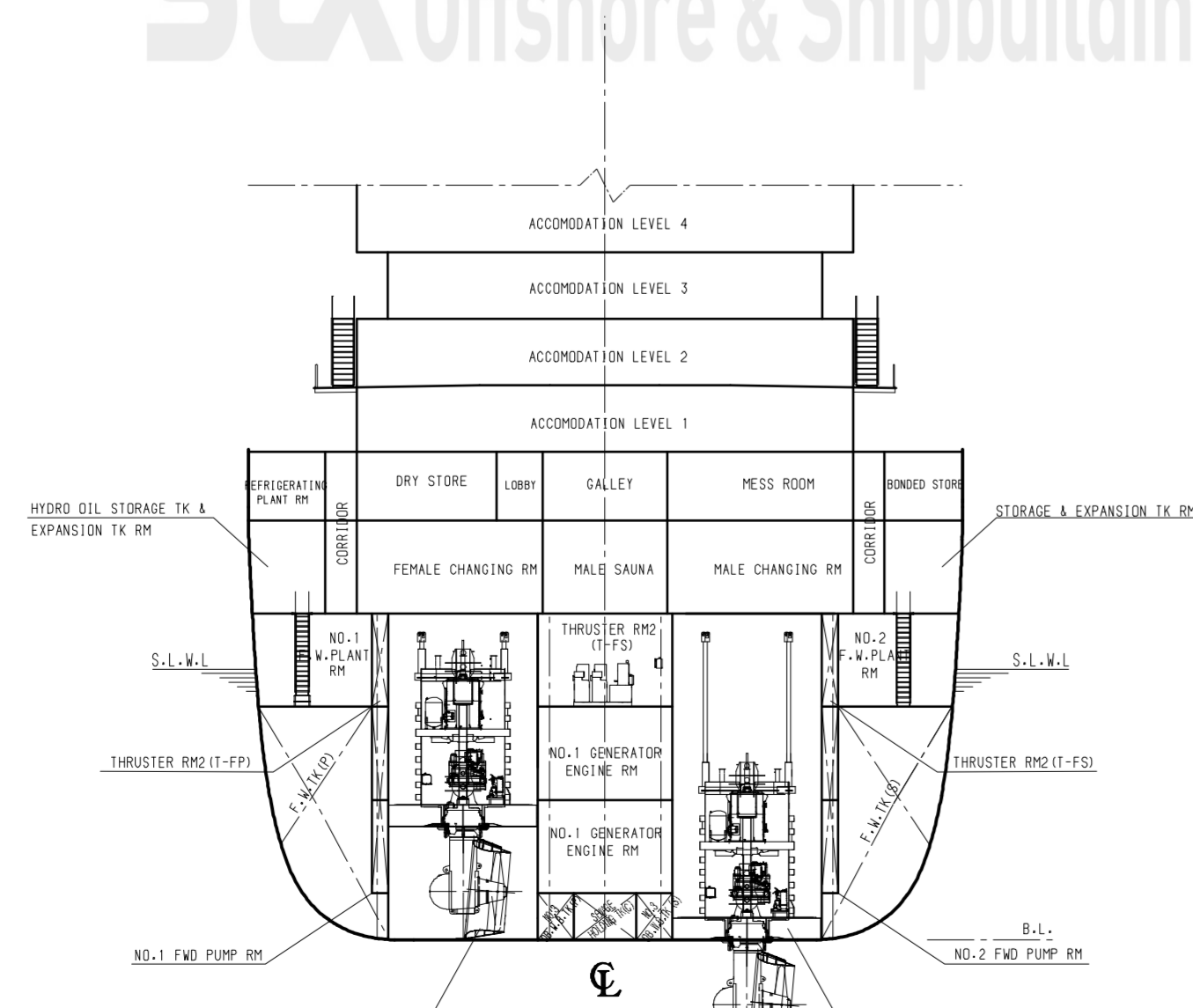
stx	MODEL NO.	F1004	
	TYPE	MOBILE GLOBE TROTTER	
MANAGER	S.H.LEE	TITLE	
CHECKED	D.J.KANG	PREL. GENERAL ARRANGEMENT(4/4)	
DRAWN	D.W.KIM	SCALE	DATE
TEL. NO.	+82 2 310 2093	SCALE	DATE
DEPT	OFFSHORE BASIC DESIGN TEAM	SCALE	DATE
STX Offshore & Shipbuilding		DWG. NO.	REV.
		80170000	01

STX Offshore & Shipbuilding

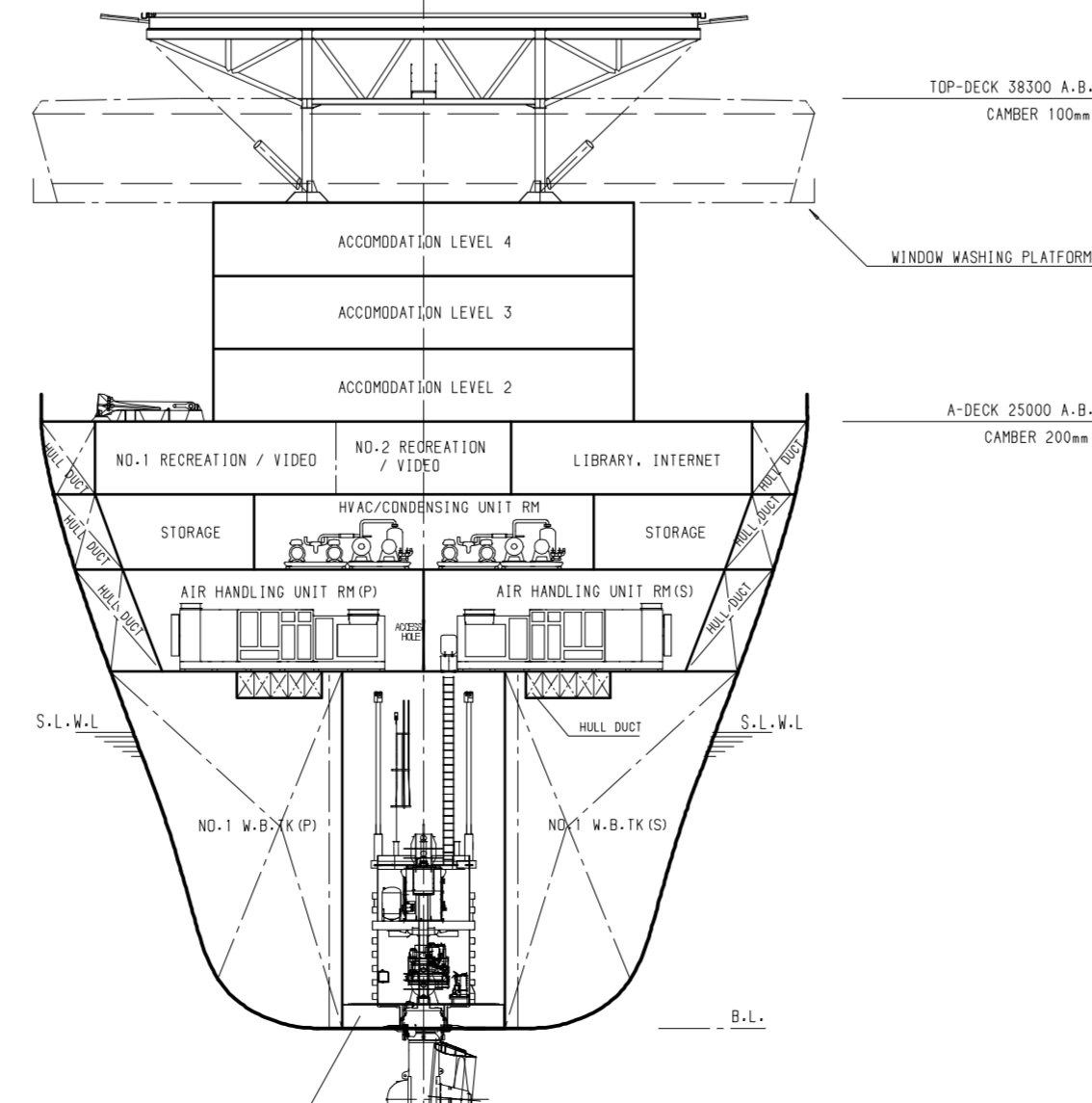
STX Offshore & Shipbuilding



TRANSVERSE SECTION FR.170



TRANSVERSE SECTION FR.190



TRANSVERSE SECTION FR.208