

[ANEXO]
**ANÁLISE DA COR
NA FILMOGRAFIA DE
PEDRO ALMODÓVAR**

HELENA SOARES

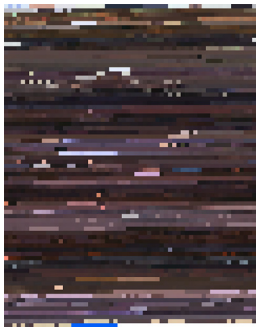
[2016]

[ANEXO]

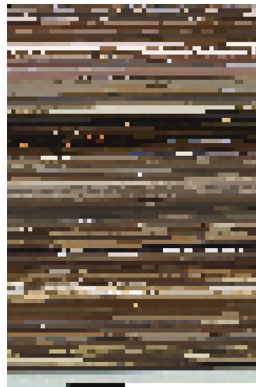
**ANÁLISE DA COR
NA FILMOGRAFIA DE
PEDRO ALMODÓVAR**

HELENA SOARES

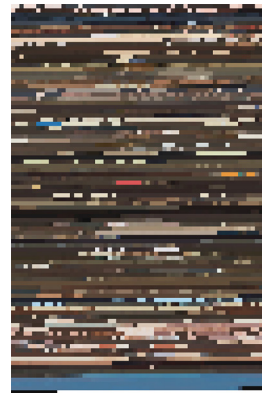
[2016]



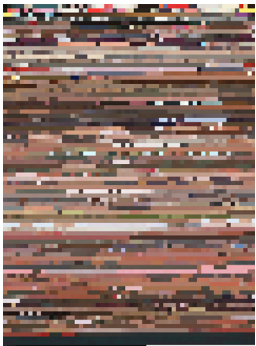
1



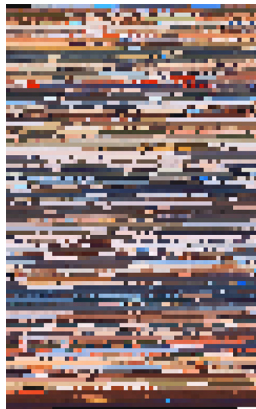
2



3



7



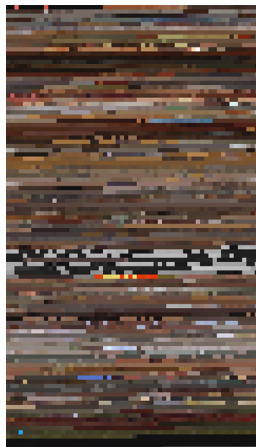
8



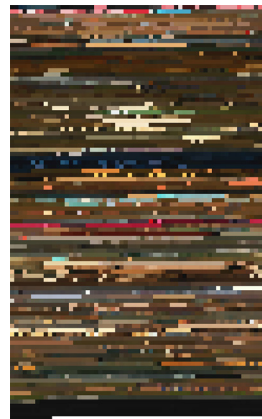
9



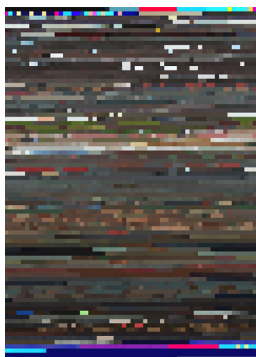
13



14



15



19

1 Pepi, Luci, Bom
y otras chicas del montón
1980, 1h 22min

2 Laberinto de Pasiones
1982, 1h 40min

3 Entre Tinieblas
1983, 1h 54mi

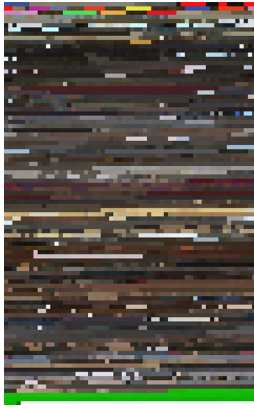
4 ¿Que he hecho yo
para merecer esto?
1984, 1h 41min

5 Matador
1986, 1h 50min

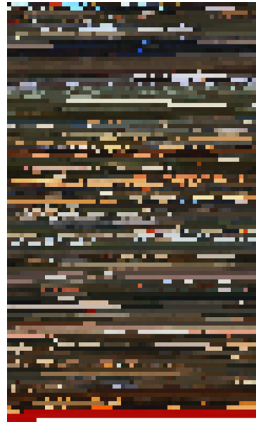
6 La ley del deseo
1987, 1h 42min

7 Mujeres al borde
de un ataque de nervios
1988, 1h 28min

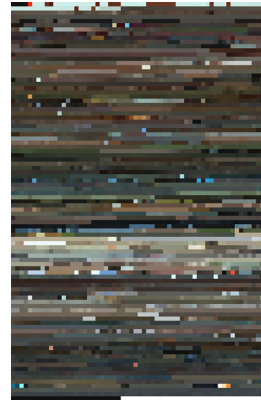
8 ¡Átame!
1989, 1h 41min



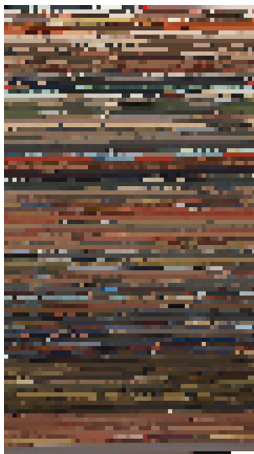
4



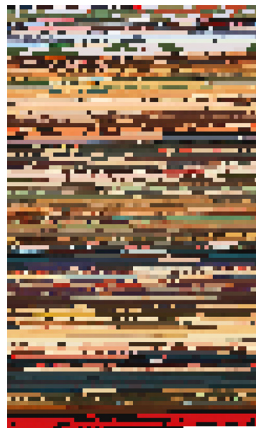
5



6



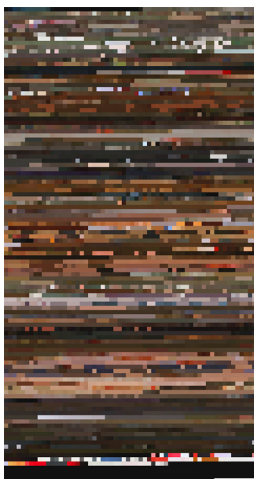
10



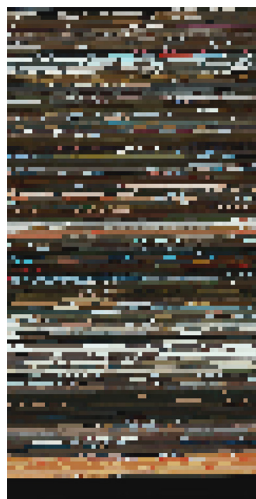
11



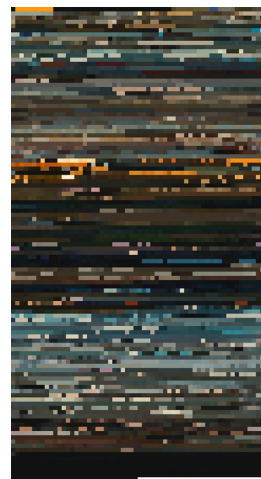
12



16



17



18

9 Tacones lejanos
1991, 1h 52min

10 Kika
1983, 1h 54min

11 La flor de mi secreto
1995, 1h 53min

12 En carne trémula
1997, 1h 43min

13 Todo sobre mi madre
1999, 1h 41min

14 Hable con ella
2002, 1h 52min

15 La mala educación
2004, 1h 46min

16 Volver
2006, 2h 01min

17 Los abrazos rotos
2009, 2h 07min

18 La piel que habito
2011, 2h 00min

19 Los amantes pasajeros
2013, 1h 30min

MAPEAMENTO I: Barcode



1



2



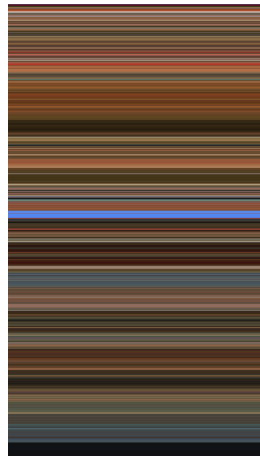
3



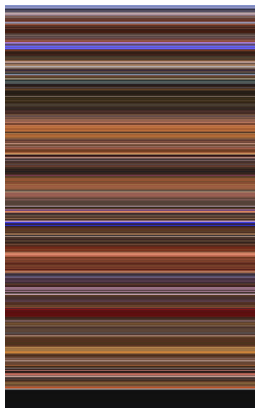
7



8



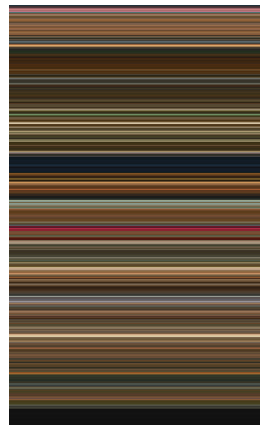
9



13



14



15



19

1 Pepi, Luci, Bom
y otras chicas del montón
1980, 1h 22min

2 Laberinto de Pasiones
1982, 1h 40min

3 Entre Tinieblas
1983, 1h 54mi

4 ¿Que he hecho yo
para merecer esto?
1984, 1h 41min

5 Matador
1986, 1h 50min

6 La ley del deseo
1987, 1h 42min

7 Mujeres al borde
de un ataque de nervios
1988, 1h 28min

8 ¡Átame!
1989, 1h 41min



4



5



6



10



11



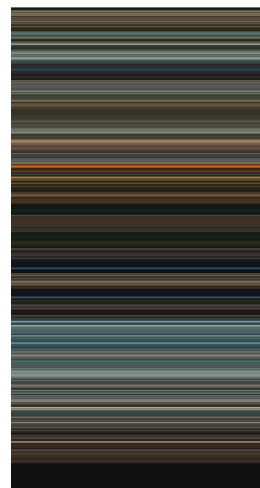
12



16



17



18

9 Tacones lejanos
1991, 1h 52min

10 Kika
1983, 1h 54min

11 La flor de mi secreto
1995, 1h 53min

12 En carne trémula
1997, 1h 43min

13 Todo sobre mi madre
1999, 1h 41min

14 Hable con ella
2002, 1h 52min

15 La mala educación
2004, 1h 46min

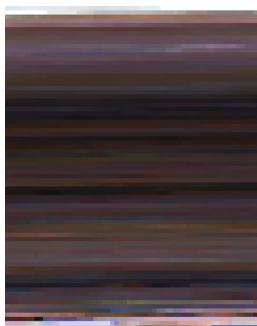
16 Volver
2006, 2h 01min

17 Los abrazos rotos
2009, 2h 07min

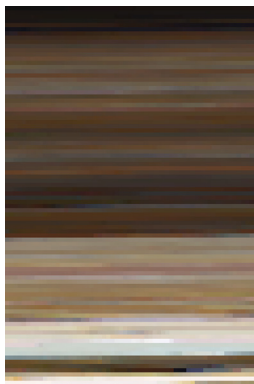
18 La piel que habito
2011, 2h 00min

19 Los amantes pasajeros
2013, 1h 30min

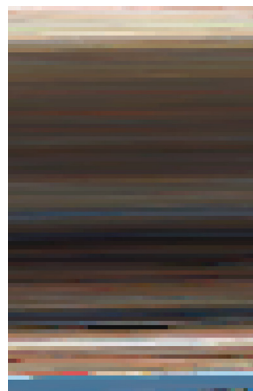
MAPEAMENTO I: Cores Agrupadas por Tonalidade (CMC I:c)



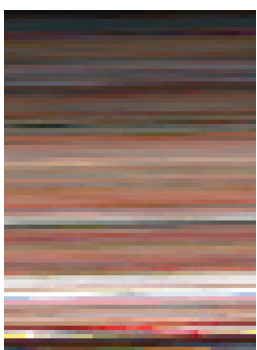
1



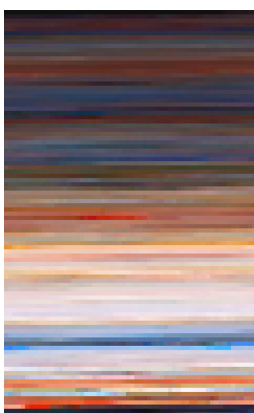
2



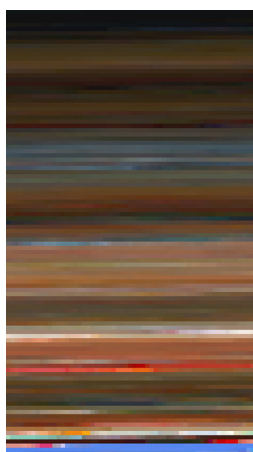
3



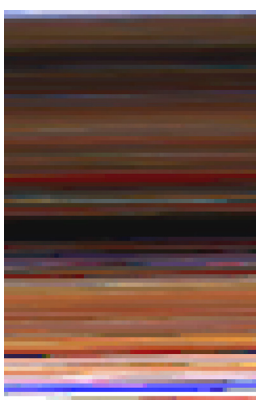
7



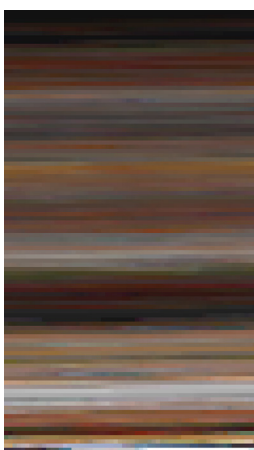
8



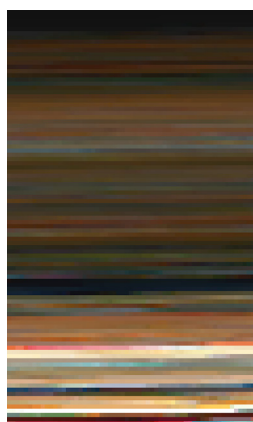
9



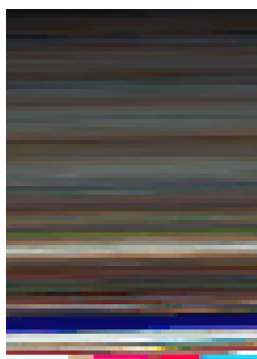
13



14



15



19

1 Pepi, Luci, Bom
y otras chicas del montón
1980, 1h 22min

2 Laberinto de Pasiones
1982, 1h 40min

3 Entre Tinieblas
1983, 1h 54mi

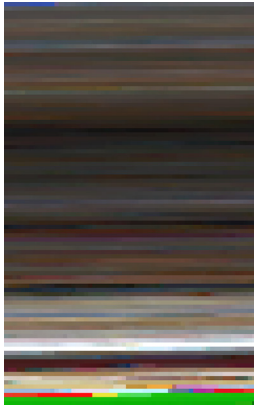
4 ¿Que he hecho yo
para merecer esto?
1984, 1h 41min

5 Matador
1986, 1h 50min

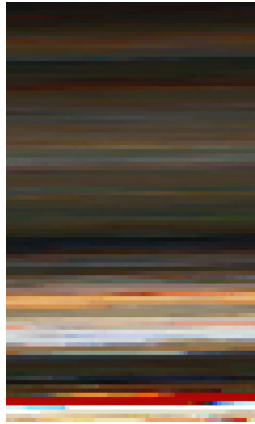
6 La ley del deseo
1987, 1h 42min

7 Mujeres al borde
de un ataque de nervios
1988, 1h 28min

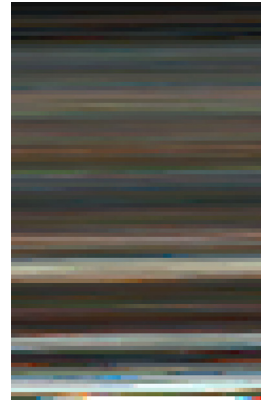
8 ¡Átame!
1989, 1h 41min



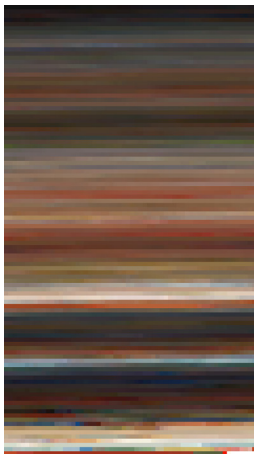
4



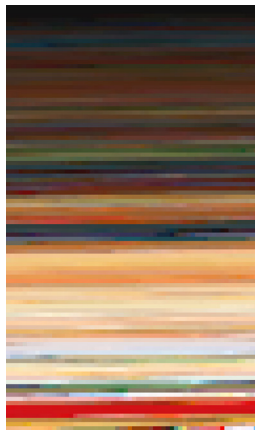
5



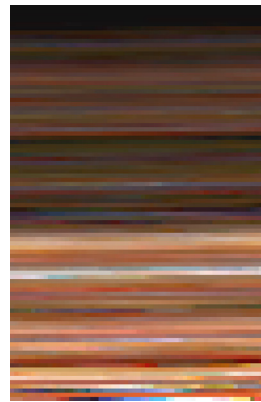
6



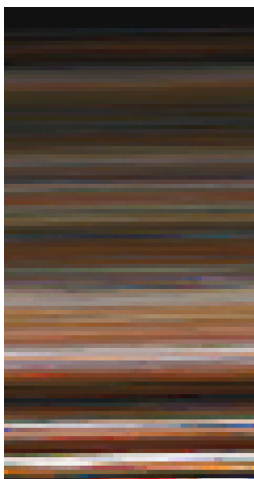
10



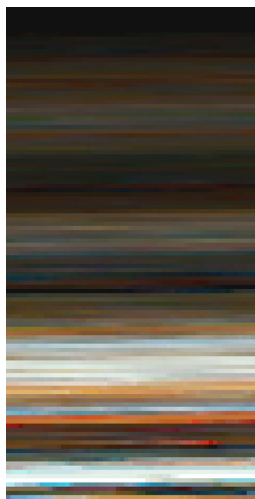
11



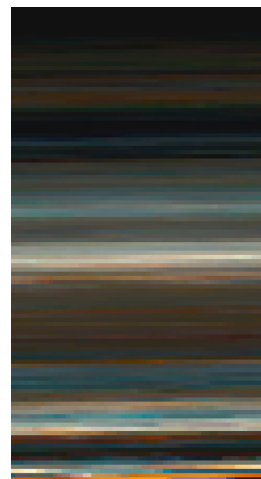
12



16



17



18

9 Tacones lejanos
1991, 1h 52min

10 Kika
1983, 1h 54min

11 La flor de mi secreto
1995, 1h 53min

12 En carne trémula
1997, 1h 43min

13 Todo sobre mi madre
1999, 1h 41min

14 Hable con ella
2002, 1h 52min

15 La mala educación
2004, 1h 46min

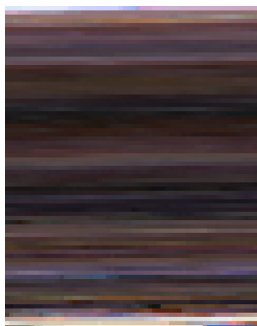
16 Volver
2006, 2h 01min

17 Los abrazos rotos
2009, 2h 07min

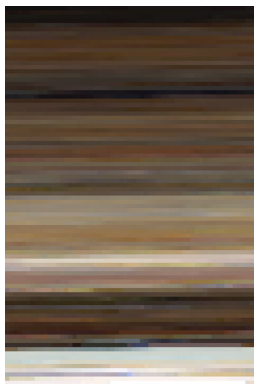
18 La piel que habito
2011, 2h 00min

19 Los amantes pasajeros
2013, 1h 30min

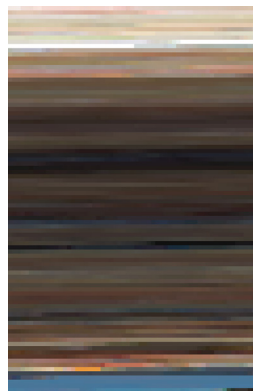
MAPEAMIENTO I: Cores Agrupadas por Tonalidade (CIEDE)



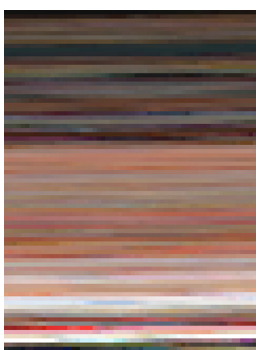
1



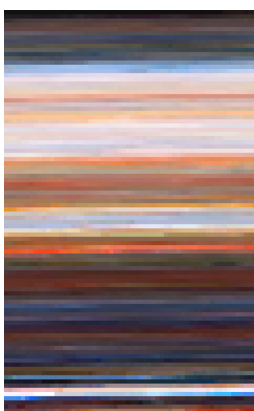
2



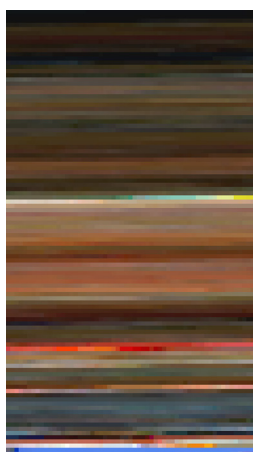
3



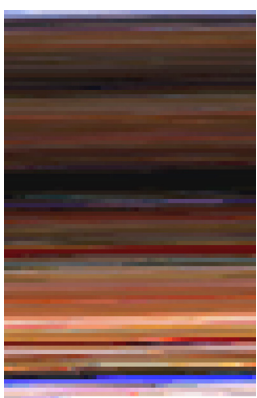
7



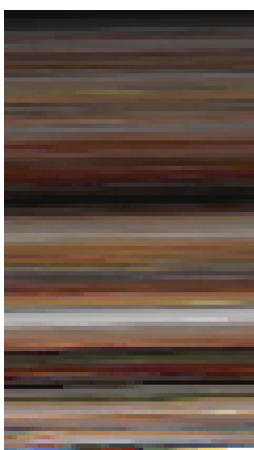
8



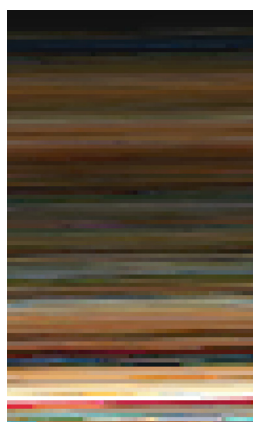
9



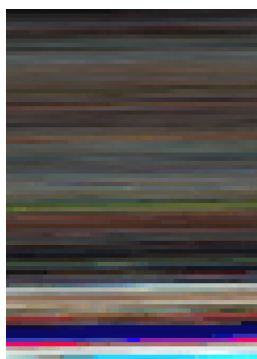
13



14



15



19

1 Pepi, Luci, Bom
y otras chicas del montón
1980, 1h 22min

2 Laberinto de Pasiones
1982, 1h 40min

3 Entre Tinieblas
1983, 1h 54mi

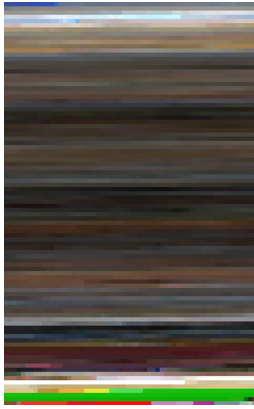
4 ¿Que he hecho yo
para merecer esto?
1984, 1h 41min

5 Matador
1986, 1h 50min

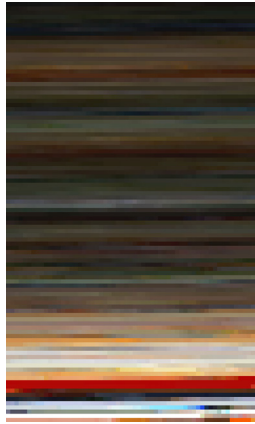
6 La ley del deseo
1987, 1h 42min

7 Mujeres al borde
de un ataque de nervios
1988, 1h 28min

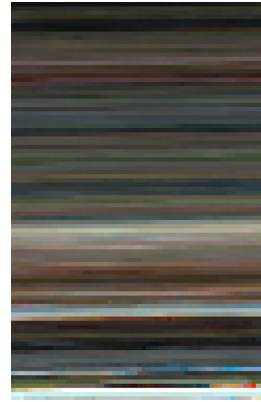
8 ¡Átame!
1989, 1h 41min



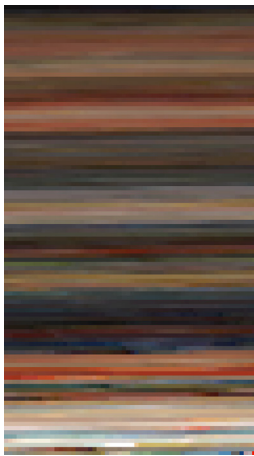
4



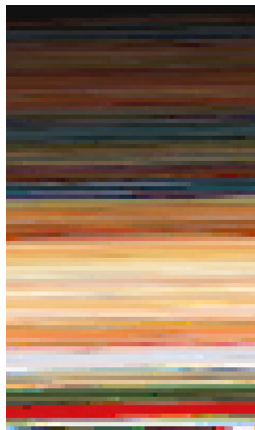
5



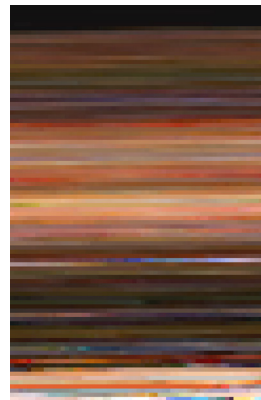
6



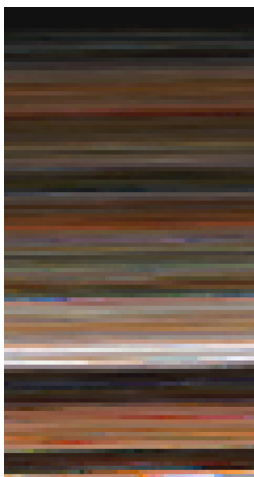
10



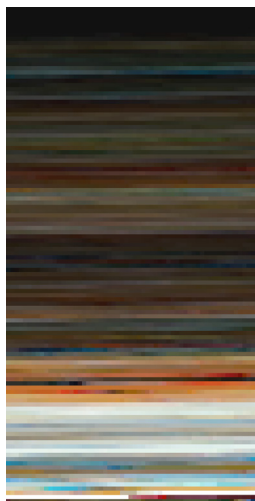
11



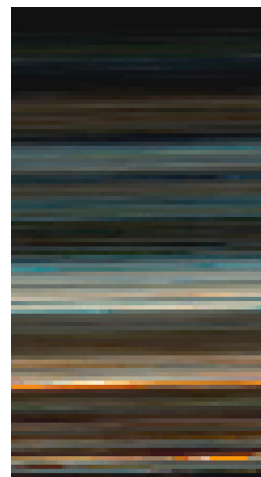
12



16



17



18

9 Tacones lejanos
1991, 1h 52min

10 Kika
1983, 1h 54min

11 La flor de mi secreto
1995, 1h 53min

12 En carne trémula
1997, 1h 43min

13 Todo sobre mi madre
1999, 1h 41min

14 Hable con ella
2002, 1h 52min

15 La mala educación
2004, 1h 46min

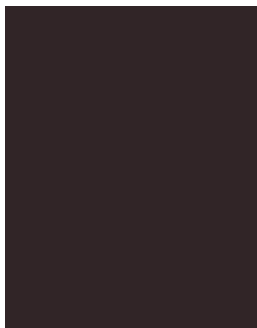
16 Volver
2006, 2h 01min

17 Los abrazos rotos
2009, 2h 07min

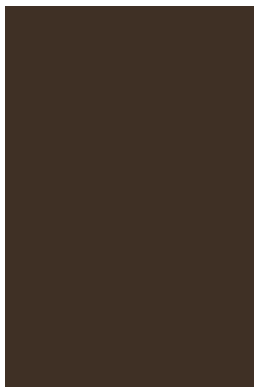
18 La piel que habito
2011, 2h 00min

19 Los amantes pasajeros
2013, 1h 30min

MAPEAMIENTO I: Cor Predominante



1



2



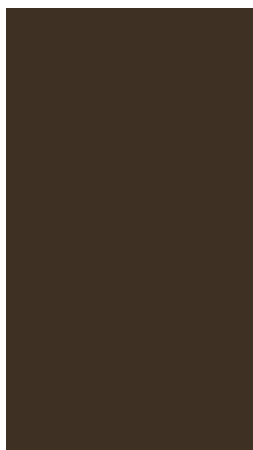
3



7



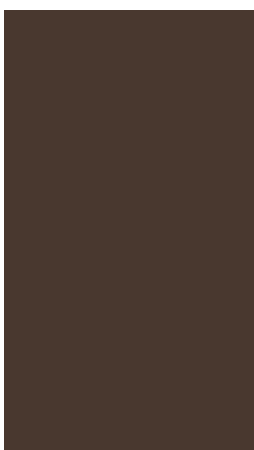
8



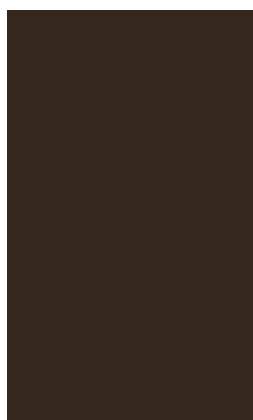
9



13



14



15



19

1 Pepi, Luci, Bom
y otras chicas del montón
1980, 1h 22min

2 Laberinto de Pasiones
1982, 1h 40min

3 Entre Tinieblas
1983, 1h 54mi

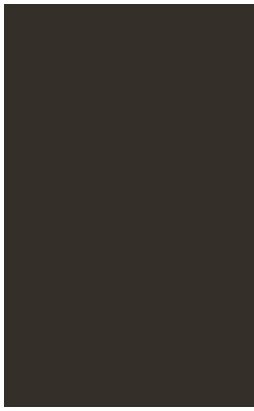
4 ¿Que he hecho yo
para merecer esto?
1984, 1h 41min

5 Matador
1986, 1h 50min

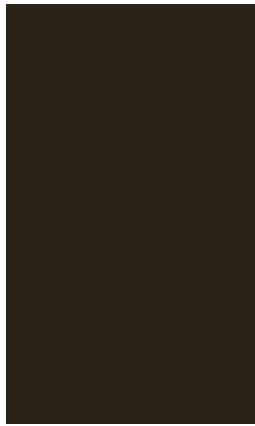
6 La ley del deseo
1987, 1h 42min

7 Mujeres al borde
de un ataque de nervios
1988, 1h 28min

8 ¡Átame!
1989, 1h 41min



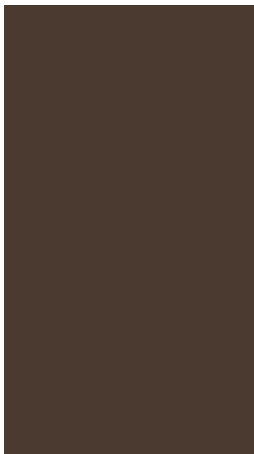
4



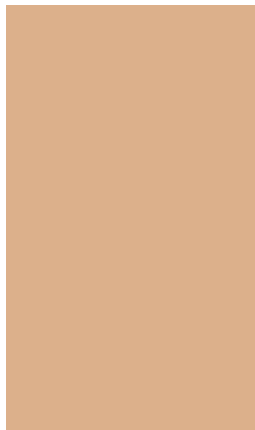
5



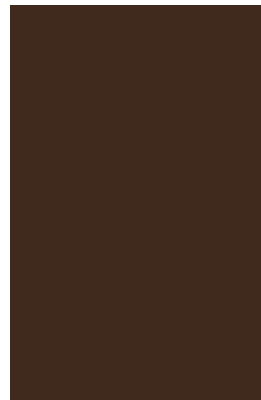
6



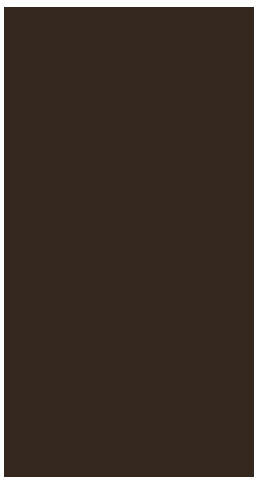
10



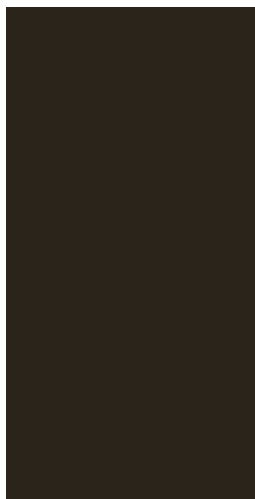
11



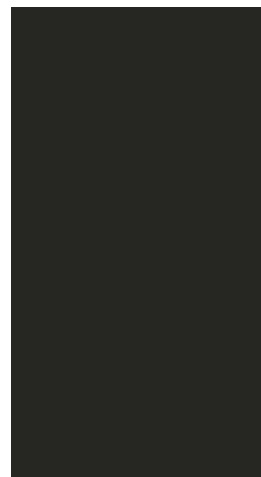
12



16



17



18

9 Tacones lejanos
1991, 1h 52min

10 Kika
1983, 1h 54min

11 La flor de mi secreto
1995, 1h 53min

12 En carne trémula
1997, 1h 43min

13 Todo sobre mi madre
1999, 1h 41min

14 Hable con ella
2002, 1h 52min

15 La mala educación
2004, 1h 46min

16 Volver
2006, 2h 01min

17 Los abrazos rotos
2009, 2h 07min

18 La piel que habito
2011, 2h 00min

19 Los amantes pasajeros
2013, 1h 30min

Este destacável faz parte da Dissertação de Mestrado "A cor como veículo de comunicação: o design gráfico como ferramenta de visualização da cor na filmografia de Pedro Almodóvar"

Helena Soares [2016]

