

SYSVRF FLOOR CB 45 Q

Item no. 314235

Document type: **Product card**

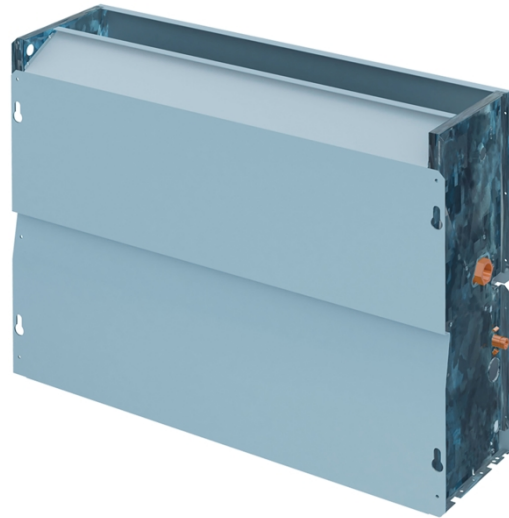
Document date: **2017-11-25**

Generated by: **Systemair Online Catalogue**

Description

Features

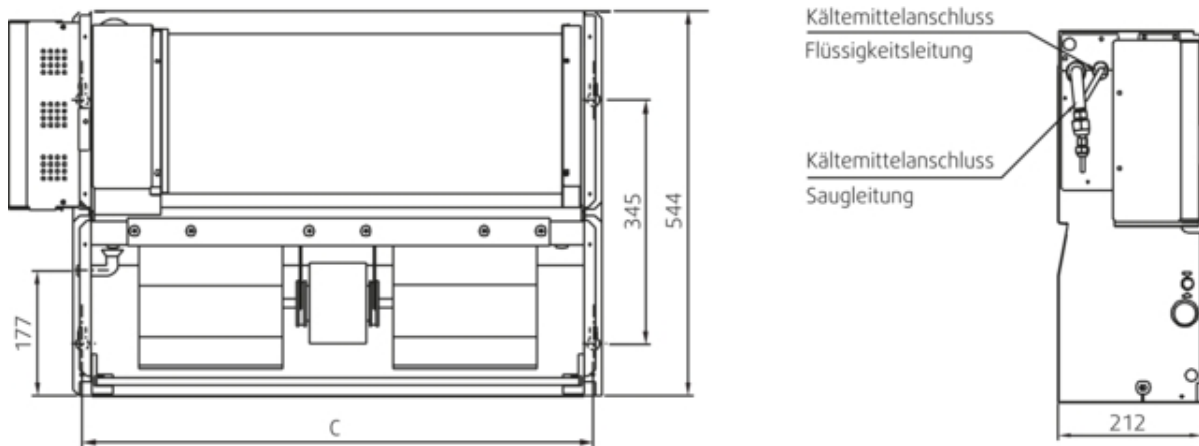
- With only 21cm thick, the unit can be easily hidden in narrow space.
- Models 71 and 80 are equipped with high efficient DC fan motor.
- Washable air filter included.
- Built-in electronic expansion valve (EXV) ensuring precise flow control.
- Infrared receiver and remote controller SYSCONTROL RM 02 with address setting function as standard equipment.
- Power supply 50Hz or 60Hz (only 71 and 80)



Technical parameters

Default group		
Cooling capacity	4500	W
Power Input cooling	0,049	kW
Current	0,22	A
Heating capacity	5000	W
Power Input heating	0,049	kW
Voltage	230	V
Frequency	50	Hz
Phase	1	~
Fan type	AC	
Air flow	542	m ³ /h
Refrigerant type	R410A	
Dimensions (LxHxD)	1036x544x212	mm
Weight	29,5	kg
Operating ambient temperature range cooling	17-32	°C
Operating ambient temperature range heating	10-28	°C
Sound data		
Sound pressure level at 1m - indoor unit	34	dB(A)

Dimensions



		A	B	C
FLOOR CB 22	mm	6.4	12.7	725
FLOOR CB 28	mm	6.4	12.7	725
FLOOR CB 36	mm	6.4	12.7	925
FLOOR CB 45	mm	6.4	12.7	925
FLOOR CB 56	mm	9.5	15.9	1225


Accessories

Electric accessories

[SYS WC 29 \(314772\)](#)

[SYS WC 120 \(314774\)](#)

Documentation

 [SYSVRF FLOOR_IM EN.pdf \(2,16MB\)](#)