

CANCER AMONG ELDERLY. A 10-YEAR CHARACTERIZATION OF CASES FROM THE MADEIRA ARCHIPELAGO (PORTUGAL) CANCER REGISTRY.

Pedro Berenguer^{1,2}, Sara Müller^{1,2}, Cláudia Fraga^{1,2}, Patrícia Serrão^{1,2}, Rubina Teixeira³, José Camacho^{1,2}, Carolina Camacho^{1,2,*}

¹ Registo Oncológico da Região Autónoma da Madeira, Registo Oncológico Nacional – RORAM, RON, 9004-514 Funchal, Portugal

² Serviço de Saúde da Região Autónoma da Madeira – SESARAM, EPERAM, 9004-514 Funchal, Portugal

³ Joaquim Chaves Saúde, Clínica de Radioncologia da Madeira, 9000-238, Funchal, Portugal

* E-mail: carolina.camacho@sesaram.pt

Background

Life expectancy increases diseases affecting elderly population. Cancer is one of the main causes of morbidity/mortality worldwide. In Portugal, is the second leading cause of mortality, accounting for a 1/4 of deaths. In this study, we characterized cancer among elderly from Madeira. Incidence rates, clinic stage, performance status (PS), anti-neoplastic treatment, risk of death and survival rates were addressed.

Methods

Data from 2010-2019, were collected on the National Cancer Registry platform (RON) including residents on Autonomous Region of Madeira. Elderly was defined as age ≥ 65 years (WHO): young-old (65-74 years), middle-old (75-84 years) and very-old (84+ years). Chi-square Test of Independence was used to relate categorical variables, and survival was calculated using Kaplan-Meier estimates. Cox regression was used to verify the relationship between survival and different predictors. Topographies were classified according to ICD-10.

Results

10614 cancer cases (excluding skin non-melanoma - C44), with a median age of 66 years, were registered on RON. 5697 cases were elderly (54,9% males), from which prostate cancers (C61) were the most frequent among males, and breast cancers (C50) among females. Annual incidence rates tended to increase. The most frequently diagnosed cancers in early stages (I-II) were corpus uteri (C54; 62.5%) and in advanced stages (III-IV) were trachea, bronchus and lungs (C33-34; 79.5% in males and 77.5% in females). Most cases had anti-neoplastic treatment, correlated with clinic stage, and PS for most of the studied cancers ($P < 0.05$). Anti-neoplastic treatment increased the 5-year survival from 11.1% to 49.1%. Trachea, bronchus and lungs cancers were the most common cause-of-death “tumor” among elderly (81.5%).

Discussion and conclusions

Elderlies represented more than half of the registered cases. Although risk increases with age, patients diagnosed in early stages have more effective anti-neoplastic options and consequently better prognostic (survival rates).

Preference

Poster presentation.

CANCER AMONG ELDERLY. A 10-YEAR CHARACTERIZATION OF CASES FROM THE MADEIRA ARCHIPELAGO (PORTUGAL) CANCER REGISTRY.

Pedro Berenguer^{1,2}, Sara Müller^{1,2}, Cláudia Fraga^{1,2}, Patrícia Serrão^{1,2}, Rubina Teixeira³, José Camacho^{1,2}, Carolina Camacho^{1,2,*}

¹Registo Oncológico da Região Autónoma da Madeira, Registo Oncológico Nacional – RORAM, RON, 9004-514 Funchal, Portugal

²Serviço de Saúde da Região Autónoma da Madeira – SESARAM, EPERAM, 9004-514 Funchal, Portugal

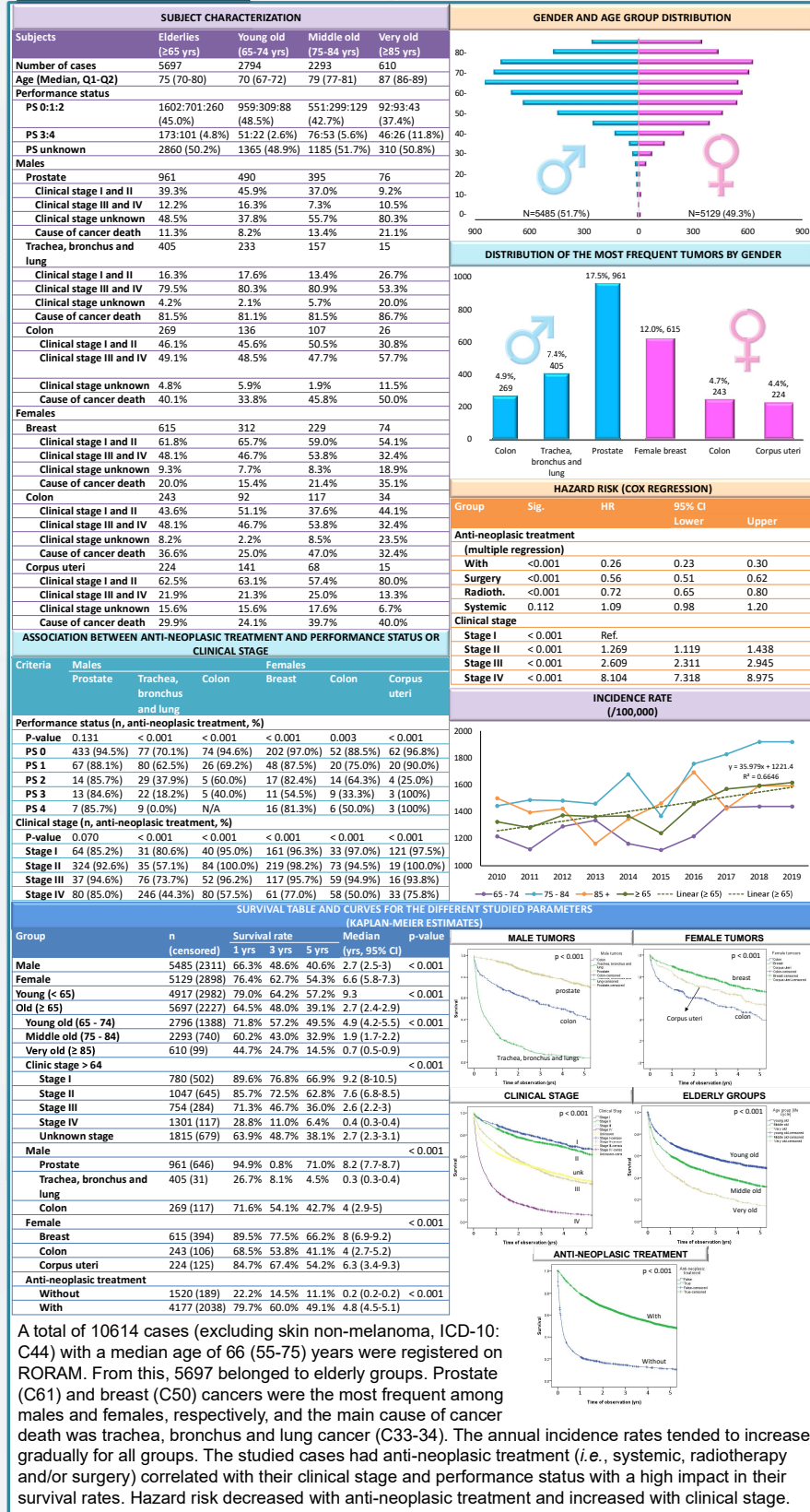
³Joaquim Chaves Saúde, Clínica de Radioncologia da Madeira, 9000-238, Funchal, Portugal

*E-mail: carolina.camacho@sesaram.pt

INTRODUCTION

- The evolution of science and improvement of medicine led to the extension of life expectancy resulting in a higher number of elder people among population.
- Consequently, life expectancy also increases diseases, such as cancer, one of the main causes of morbidity and mortality worldwide.
- In Portugal, cancer is the second leading cause of mortality, accounting for about 1/4 of deaths.
- With this work, it is intended to characterize cancer among elderly population, from Autonomous Region of Madeira (RAM), Portugal. The 3 most frequent cancer from each gender were addressed.

RESULTS



MATERIALS AND METHODS

- Subjects**
 - Patients diagnosed with malignant tumors between 2010-2019.
- Database**
 - Cancer cases registered on the Cancer Registry of RAM (RORAM) platform.
- Elderly groups**
 - Young-old, 65-74 years.
 - Middle-old, 75-84 years.
 - Very-old, 84+ years.
- Data treatment**
 - Association between the studied variables was performed through Chi-square test of independence.
 - Survival curves were calculated using the Kaplan-Meier estimates.
 - Relationship between survival and different predictors was evaluated through Cox regression.

CONCLUSIONS

- As expected, elderly groups were the most affected by cancer.
- Incidence rates tended to increase due to the increase in life expectancy, better diagnosis procedure and exposure to risk factors.
- Lower clinical stages and better performance status, increased the possibility of being treated with more effective anti-neoplastic options with a consequent better prognostic (survival rate).
- Anti-neoplastic treatments, especially surgery and radiotherapy, greatly decreased the hazard risk among the studied groups.